



# TEST REPORT

**Applicant:** Ajax Systems Inc  
**Address:** State of Delaware is Suite 201. 910 Foulk Rd., Country of New Castle, Wilmington, DE 19803, United States

**The following sample(s) was/were submitted and identified on behalf of the client as:**

Product name: Ajax Hub  
 Model: Ajax Hub  
 Trade mark:



Manufacturer: "Research and Production Enterprise "Ajax" LLC  
 Address: 04073, Ukraine, Kyiv, Sklyarenko, 5  
 Sample Received Date: Nov. 28, 2016  
 Testing Period: Nov. 28, 2016~ Dec. 05, 2016

**Test Requirement:**

- As specified by client, to screen Lead(Pb), Cadmium(Cd), Mercury(Hg), Chromium(Cr) and Bromine(Br) in the submitted sample(s) by XRF. When screening results exceed the XRF screening limit in IEC62321-3-1: 2013, further use of chemical methods are required to test the Lead(Pb), Cadmium(Cd), Mercury(Hg), Hexavalent Chromium(Cr(VI)), Polybrominated Biphenyls(PBBs) and Polybrominated Diphenyl Ethers(PBDEs) in the submitted samples in accordance with ROHS directive 2011/65/EU.
- As specified by client, to test Lead(Pb), Cadmium(Cd), Mercury(Hg) in the submitted sample(s) according to the requirement with battery directive 2006/66/EC and amendment 2013/56/EU.

**Conclusion:**


Pass

Refer to  
The Battery

**Test Result(s):** Please refer to the following page(s);

**Test Method:** Please refer to the following page(s);


Tested by



Reviewed by:

\_\_\_\_\_

Approved by:



Date:

\_\_\_\_\_



**Shenzhen NTEK Testing Technology Co., Ltd.**

Address: 1/F, Building E, Fenda Science Park, Sanwei Community, Xixiang Street, Bao' an District, Shenzhen 518126 P.R.China  
 Tel: +86-755-6115 6588 Fax: +86-755-6115 6599 http://www.ntek.org.cn

**Test Result(s):**

## 1. Power line

Sample No.	Sample Description	Tested Items	XRF Screening Test	Chemical Test (mg/kg)	Conclusion
1	Silvery metal plug of power line	Pb	OL	24156 <sup>#1</sup>	PASS
		Cd	BL	/	
		Hg	BL	/	
		Cr(Cr(VI) )	BL	/	
		Br(PBBs&PBDEs)	/	/	
2	White exterior wire jacket of power line	Pb	BL	/	PASS
		Cd	BL	/	
		Hg	BL	/	
		Cr(Cr(VI) )	BL	/	
		Br(PBBs&PBDEs)	BL	/	
3	White encapsulation of power line	Pb	BL	/	PASS
		Cd	BL	/	
		Hg	BL	/	
		Cr(Cr(VI) )	BL	/	
		Br(PBBs&PBDEs)	BL	/	
4	White plastic of power line	Pb	BL	/	PASS
		Cd	BL	/	
		Hg	BL	/	
		Cr(Cr(VI) )	BL	/	
		Br(PBBs&PBDEs)	IN	N.D.	
5	Red thin wire jacket of power line	Pb	BL	/	PASS
		Cd	BL	/	
		Hg	BL	/	
		Cr(Cr(VI) )	BL	/	
		Br(PBBs&PBDEs)	BL	/	
6	Blue thin wire jacket of power line	Pb	BL	/	PASS
		Cd	BL	/	
		Hg	BL	/	
		Cr(Cr(VI) )	BL	/	
		Br(PBBs&PBDEs)	BL	/	
7	Silvery core of wire of power line	Pb	BL	/	PASS
		Cd	BL	/	
		Hg	BL	/	
		Cr(Cr(VI) )	BL	/	
		Br(PBBs&PBDEs)	/	/	



8	Copper metal contact sheet of power line	Pb	BL	/	PASS
		Cd	BL	/	
		Hg	BL	/	
		Cr(Cr(VI) )	BL	/	
		Br(PBBs&PBDEs)	/	/	

2. Parvicostellae

Sample No.	Sample Description	Tested Items	XRF Screening Test	Chemical Test (mg/kg)	Conclusion
9	Transparent plastic shell of parvicostellae port	Pb	BL	/	PASS
		Cd	BL	/	
		Hg	BL	/	
		Cr(Cr(VI) )	BL	/	
		Br(PBBs&PBDEs)	BL	/	
10	White encapsulation of parvicostellae port	Pb	BL	/	PASS
		Cd	BL	/	
		Hg	BL	/	
		Cr(Cr(VI) )	BL	/	
		Br(PBBs&PBDEs)	BL	/	
11	White exterior wire jacket of parvicostellae port	Pb	BL	/	PASS
		Cd	BL	/	
		Hg	BL	/	
		Cr(Cr(VI) )	BL	/	
		Br(PBBs&PBDEs)	BL	/	
12	White thin wire jacket of parvicostellae port	Pb	BL	/	PASS
		Cd	BL	/	
		Hg	BL	/	
		Cr(Cr(VI) )	BL	/	
		Br(PBBs&PBDEs)	BL	/	
13	Orange thin wire jacket of parvicostellae port	Pb	BL	/	PASS
		Cd	BL	/	
		Hg	BL	/	
		Cr(Cr(VI) )	BL	/	
		Br(PBBs&PBDEs)	BL	/	
14	Green thin wire jacket of parvicostellae port	Pb	BL	/	PASS
		Cd	BL	/	
		Hg	BL	/	
		Cr(Cr(VI) )	BL	/	
		Br(PBBs&PBDEs)	BL	/	

15	Brown thin wire jacket of parvicostellae port	Pb	BL	/	PASS
		Cd	BL	/	
		Hg	BL	/	
		Cr(Cr(VI) )	BL	/	
		Br(PBBs&PBDEs)	BL	/	
16	Blue thin wire jacket of parvicostellae port	Pb	BL	/	PASS
		Cd	BL	/	
		Hg	BL	/	
		Cr(Cr(VI) )	BL	/	
		Br(PBBs&PBDEs)	BL	/	
17	Core of wire of parvicostellae port	Pb	BL	/	PASS
		Cd	BL	/	
		Hg	BL	/	
		Cr(Cr(VI) )	BL	/	
		Br(PBBs&PBDEs)	/	/	

## 3. Wire

Sample No.	Sample Description	Tested Items	XRF Screening Test	Chemical Test (mg/kg)	Conclusion
18	Blue wire jacket	Pb	BL	/	PASS
		Cd	BL	/	
		Hg	BL	/	
		Cr(Cr(VI) )	BL	/	
		Br(PBBs&PBDEs)	BL	/	
19	White wire jacket	Pb	BL	/	PASS
		Cd	BL	/	
		Hg	BL	/	
		Cr(Cr(VI) )	BL	/	
		Br(PBBs&PBDEs)	BL	/	
20	Core of wire	Pb	BL	/	PASS
		Cd	BL	/	
		Hg	BL	/	
		Cr(Cr(VI) )	BL	/	
		Br(PBBs&PBDEs)	/	/	

## 4. Shell

Sample No.	Sample Description	Tested Items	XRF Screening Test	Chemical Test (mg/kg)	Conclusion
21	White plastic shell	Pb	BL	/	PASS
		Cd	BL	/	
		Hg	BL	/	
		Cr(Cr(VI) )	BL	/	
		Br(PBBs&PBDEs)	BL	/	
22	Transparent plastic cover of white plastic shell	Pb	BL	/	PASS
		Cd	BL	/	
		Hg	BL	/	
		Cr(Cr(VI) )	BL	/	
		Br(PBBs&PBDEs)	BL	/	
23	Red foam of white plastic shell	Pb	BL	/	PASS
		Cd	BL	/	
		Hg	BL	/	
		Cr(Cr(VI) )	BL	/	
		Br(PBBs&PBDEs)	BL	/	
24	Silvery metal long screw of white plastic shell	Pb	BL	/	PASS
		Cd	BL	/	
		Hg	BL	/	
		Cr(Cr(VI) )	IN	Negative	
		Br(PBBs&PBDEs)	/	/	
25	Silvery metal short screw of white plastic shell	Pb	BL	/	PASS
		Cd	BL	/	
		Hg	BL	/	
		Cr(Cr(VI) )	IN	Negative	
		Br(PBBs&PBDEs)	/	/	
26	White label paper of white plastic shell	Pb	BL	/	PASS
		Cd	BL	/	
		Hg	BL	/	
		Cr(Cr(VI) )	BL	/	
		Br(PBBs&PBDEs)	BL	/	

## 5. PCB

Sample No.	Sample Description	Tested Items	XRF Screening Test	Chemical Test (mg/kg)	Conclusion
27	PCB	Pb	BL	/	PASS
		Cd	BL	/	
		Hg	BL	/	
		Cr(Cr(VI) )	BL	/	
		Br(PBBs&PBDEs)	IN	N.D.	
28	Tin solder	Pb	BL	/	PASS
		Cd	BL	/	
		Hg	BL	/	
		Cr(Cr(VI) )	BL	/	
		Br(PBBs&PBDEs)	/	/	
29	Silvery metal sheet of keypad switch	Pb	BL	/	PASS
		Cd	BL	/	
		Hg	BL	/	
		Cr(Cr(VI) )	BL	/	
		Br(PBBs&PBDEs)	/	/	
30	Red plastic keypad of keypad switch	Pb	BL	/	PASS
		Cd	BL	/	
		Hg	BL	/	
		Cr(Cr(VI) )	BL	/	
		Br(PBBs&PBDEs)	BL	/	
31	Metal spring of keypad switch	Pb	BL	/	PASS
		Cd	BL	/	
		Hg	BL	/	
		Cr(Cr(VI) )	BL	/	
		Br(PBBs&PBDEs)	/	/	
32	Black plastic of keypad switch	Pb	BL	/	PASS
		Cd	BL	/	
		Hg	BL	/	
		Cr(Cr(VI) )	BL	/	
		Br(PBBs&PBDEs)	BL	/	
33	Metal pin of keypad switch	Pb	BL	/	PASS
		Cd	BL	/	
		Hg	BL	/	
		Cr(Cr(VI) )	BL	/	
		Br(PBBs&PBDEs)	/	/	



34	White plastic of keypad switch	Pb	BL	/	PASS
		Cd	BL	/	
		Hg	BL	/	
		Cr(Cr(VI) )	BL	/	
		Br(PBBs&PBDEs)	BL	/	
35	Silvery metal shell of contact switch	Pb	BL	/	PASS
		Cd	BL	/	
		Hg	BL	/	
		Cr(Cr(VI) )	BL	/	
		Br(PBBs&PBDEs)	/	/	
36	Silvery metal shrapnel of contact switch	Pb	BL	/	PASS
		Cd	BL	/	
		Hg	BL	/	
		Cr(Cr(VI) )	BL	/	
		Br(PBBs&PBDEs)	/	/	
37	Metal pin of contact switch	Pb	BL	/	PASS
		Cd	BL	/	
		Hg	BL	/	
		Cr(Cr(VI) )	BL	/	
		Br(PBBs&PBDEs)	/	/	
38	Black plastic of contact switch	Pb	BL	/	PASS
		Cd	BL	/	
		Hg	BL	/	
		Cr(Cr(VI) )	BL	/	
		Br(PBBs&PBDEs)	BL	/	
39	Black plastic button of contact switch	Pb	BL	/	PASS
		Cd	BL	/	
		Hg	BL	/	
		Cr(Cr(VI) )	BL	/	
		Br(PBBs&PBDEs)	BL	/	
40	White plastic of white slot	Pb	BL	/	PASS
		Cd	BL	/	
		Hg	BL	/	
		Cr(Cr(VI) )	BL	/	
		Br(PBBs&PBDEs)	BL	/	
41	Metal plug pin of white slot	Pb	BL	/	PASS
		Cd	BL	/	
		Hg	BL	/	
		Cr(Cr(VI) )	BL	/	
		Br(PBBs&PBDEs)	/	/	



42	Red spring	Pb	IN	48	PASS
		Cd	BL	/	
		Hg	BL	/	
		Cr(Cr(VI) )	BL	/	
		Br(PBBs&PBDEs)	/	/	
43	Silvery metal shell of TF card slot	Pb	BL	/	PASS
		Cd	BL	/	
		Hg	BL	/	
		Cr(Cr(VI) )	BL	/	
		Br(PBBs&PBDEs)	/	/	
44	Black plastic of TF card slot	Pb	BL	/	PASS
		Cd	BL	/	
		Hg	BL	/	
		Cr(Cr(VI) )	BL	/	
		Br(PBBs&PBDEs)	BL	/	
45	Silvery metal contact sheet of TF card slot	Pb	BL	/	PASS
		Cd	BL	/	
		Hg	BL	/	
		Cr(Cr(VI) )	BL	/	
		Br(PBBs&PBDEs)	/	/	
46	Black plastic plug row of TF card slot	Pb	BL	/	PASS
		Cd	BL	/	
		Hg	BL	/	
		Cr(Cr(VI) )	BL	/	
		Br(PBBs&PBDEs)	IN	N.D.	
47	Metal pin of TF card slot	Pb	BL	/	PASS
		Cd	BL	/	
		Hg	BL	/	
		Cr(Cr(VI) )	BL	/	
		Br(PBBs&PBDEs)	/	/	
48	PCB of TF card slot	Pb	BL	/	PASS
		Cd	BL	/	
		Hg	BL	/	
		Cr(Cr(VI) )	BL	/	
		Br(PBBs&PBDEs)	BL	/	
49	Silvery metal shell of silvery slot	Pb	BL	/	PASS
		Cd	BL	/	
		Hg	BL	/	
		Cr(Cr(VI) )	IN	Negative	
		Br(PBBs&PBDEs)	/	/	





50	Metal contact sheet of silvery slot	Pb	BL	/	PASS
		Cd	BL	/	
		Hg	BL	/	
		Cr(Cr(VI) )	BL	/	
		Br(PBBs&PBDEs)	/	/	
51	Black plastic of silvery slot	Pb	BL	/	PASS
		Cd	BL	/	
		Hg	BL	/	
		Cr(Cr(VI) )	BL	/	
		Br(PBBs&PBDEs)	IN	N.D.	
52	Green LED light of silvery slot	Pb	BL	/	PASS
		Cd	BL	/	
		Hg	BL	/	
		Cr(Cr(VI) )	BL	/	
		Br(PBBs&PBDEs)	BL	/	
53	Yellow LED light of silvery slot	Pb	BL	/	PASS
		Cd	BL	/	
		Hg	BL	/	
		Cr(Cr(VI) )	BL	/	
		Br(PBBs&PBDEs)	BL	/	
54	Metal pin of silvery slot	Pb	BL	/	PASS
		Cd	BL	/	
		Hg	BL	/	
		Cr(Cr(VI) )	BL	/	
		Br(PBBs&PBDEs)	/	/	
55	PCB of silvery slot	Pb	BL	/	PASS
		Cd	BL	/	
		Hg	BL	/	
		Cr(Cr(VI) )	BL	/	
		Br(PBBs&PBDEs)	BL	/	
56	Inductance of silvery slot	Pb	BL	/	PASS
		Cd	BL	/	
		Hg	BL	/	
		Cr(Cr(VI) )	BL	/	
		Br(PBBs&PBDEs)	/	/	
57	Copper wire	Pb	BL	/	PASS
		Cd	BL	/	
		Hg	BL	/	
		Cr(Cr(VI) )	BL	/	
		Br(PBBs&PBDEs)	/	/	



58	Metal pin of white LED light	Pb	BL	/	PASS
		Cd	BL	/	
		Hg	BL	/	
		Cr(Cr(VI) )	BL	/	
		Br(PBBs&PBDEs)	/	/	
59	White LED light body of white LED light	Pb	BL	/	PASS
		Cd	BL	/	
		Hg	BL	/	
		Cr(Cr(VI) )	BL	/	
		Br(PBBs&PBDEs)	BL	/	
60	White label of SMD PCB	Pb	BL	/	PASS
		Cd	BL	/	
		Hg	BL	/	
		Cr(Cr(VI) )	BL	/	
		Br(PBBs&PBDEs)	BL	/	
61	IC protective shell of SMD PCB	Pb	BL	/	PASS
		Cd	BL	/	
		Hg	BL	/	
		Cr(Cr(VI) )	IN	Negative	
		Br(PBBs&PBDEs)	/	/	
62	Chip 1 of SMD PCB	Pb	BL	/	PASS
		Cd	BL	/	
		Hg	BL	/	
		Cr(Cr(VI) )	BL	/	
		Br(PBBs&PBDEs)	BL	/	
63	Chip 2 of SMD PCB	Pb	BL	/	PASS
		Cd	BL	/	
		Hg	BL	/	
		Cr(Cr(VI) )	BL	/	
		Br(PBBs&PBDEs)	BL	/	
64	Chip 3 of SMD PCB	Pb	BL	/	PASS
		Cd	BL	/	
		Hg	BL	/	
		Cr(Cr(VI) )	BL	/	
		Br(PBBs&PBDEs)	BL	/	
65	SMD resistor of SMD PCB	Pb	BL	/	PASS
		Cd	BL	/	
		Hg	BL	/	
		Cr(Cr(VI) )	BL	/	
		Br(PBBs&PBDEs)	BL	/	



66	SMD capacitance of SMD PCB	Pb	BL	/	PASS
		Cd	BL	/	
		Hg	BL	/	
		Cr(Cr(VI) )	BL	/	
		Br(PBBs&PBDEs)	BL	/	
67	PCB of SMD PCB	Pb	BL	/	PASS
		Cd	BL	/	
		Hg	BL	/	
		Cr(Cr(VI) )	BL	/	
		Br(PBBs&PBDEs)	BL	/	
68	Crystal oscillator of SMD PCB	Pb	BL	/	PASS
		Cd	BL	/	
		Hg	BL	/	
		Cr(Cr(VI) )	BL	/	
		Br(PBBs&PBDEs)	BL	/	
69	Chip 1	Pb	BL	/	PASS
		Cd	BL	/	
		Hg	BL	/	
		Cr(Cr(VI) )	BL	/	
		Br(PBBs&PBDEs)	BL	/	
70	Chip 2	Pb	BL	/	PASS
		Cd	BL	/	
		Hg	BL	/	
		Cr(Cr(VI) )	BL	/	
		Br(PBBs&PBDEs)	BL	/	
71	Chip 3	Pb	BL	/	PASS
		Cd	BL	/	
		Hg	BL	/	
		Cr(Cr(VI) )	BL	/	
		Br(PBBs&PBDEs)	BL	/	
72	Chip 4	Pb	BL	/	PASS
		Cd	BL	/	
		Hg	BL	/	
		Cr(Cr(VI) )	BL	/	
		Br(PBBs&PBDEs)	BL	/	
73	SMD resistor	Pb	BL	/	PASS
		Cd	BL	/	
		Hg	BL	/	
		Cr(Cr(VI) )	BL	/	
		Br(PBBs&PBDEs)	BL	/	



74	SMD capacitor	Pb	BL	/	PASS
		Cd	BL	/	
		Hg	BL	/	
		Cr(Cr(VI) )	BL	/	
		Br(PBBs&PBDEs)	BL	/	
75	SMD diode	Pb	BL	/	PASS
		Cd	BL	/	
		Hg	BL	/	
		Cr(Cr(VI) )	BL	/	
		Br(PBBs&PBDEs)	BL	/	
76	SMD audion	Pb	BL	/	PASS
		Cd	BL	/	
		Hg	BL	/	
		Cr(Cr(VI) )	BL	/	
		Br(PBBs&PBDEs)	BL	/	
77	LED light bead of SMD	Pb	BL	/	PASS
		Cd	BL	/	
		Hg	BL	/	
		Cr(Cr(VI) )	BL	/	
		Br(PBBs&PBDEs)	BL	/	
78	Plug sheet PCB	Pb	BL	/	PASS
		Cd	BL	/	
		Hg	BL	/	
		Cr(Cr(VI) )	BL	/	
		Br(PBBs&PBDEs)	BL	/	
79	Silvery metal shell of plug sheet PCB	Pb	BL	/	PASS
		Cd	BL	/	
		Hg	BL	/	
		Cr(Cr(VI) )	BL	/	
		Br(PBBs&PBDEs)	/	/	
80	Tin solder of plug sheet PCB	Pb	IN	306	PASS
		Cd	BL	/	
		Hg	BL	/	
		Cr(Cr(VI) )	BL	/	
		Br(PBBs&PBDEs)	/	/	
81	Black plastic of row pin	Pb	BL	/	PASS
		Cd	BL	/	
		Hg	BL	/	
		Cr(Cr(VI) )	BL	/	
		Br(PBBs&PBDEs)	IN	N.D.	



82	Metal plug pin of row pin	Pb	BL	/	PASS
		Cd	BL	/	
		Hg	BL	/	
		Cr(Cr(VI) )	BL	/	
		Br(PBBs&PBDEs)	/	/	
83	Black plastic of power slot	Pb	BL	/	PASS
		Cd	BL	/	
		Hg	BL	/	
		Cr(Cr(VI) )	BL	/	
		Br(PBBs&PBDEs)	BL	/	
84	Metal plug pin of power slot	Pb	BL	/	PASS
		Cd	BL	/	
		Hg	BL	/	
		Cr(Cr(VI) )	BL	/	
		Br(PBBs&PBDEs)	/	/	
85	Silvery metal contact sheet of power slot	Pb	BL	/	PASS
		Cd	BL	/	
		Hg	BL	/	
		Cr(Cr(VI) )	BL	/	
		Br(PBBs&PBDEs)	/	/	
86	Red plastic shell of fuse	Pb	BL	/	PASS
		Cd	BL	/	
		Hg	BL	/	
		Cr(Cr(VI) )	BL	/	
		Br(PBBs&PBDEs)	BL	/	
87	Black plastic pedestal of fuse	Pb	BL	/	PASS
		Cd	BL	/	
		Hg	BL	/	
		Cr(Cr(VI) )	BL	/	
		Br(PBBs&PBDEs)	BL	/	
88	Metal wire of fuse	Pb	BL	/	PASS
		Cd	BL	/	
		Hg	BL	/	
		Cr(Cr(VI) )	BL	/	
		Br(PBBs&PBDEs)	/	/	
89	Metal pin of fuse	Pb	BL	/	PASS
		Cd	BL	/	
		Hg	BL	/	
		Cr(Cr(VI) )	BL	/	
		Br(PBBs&PBDEs)	/	/	



90	Yellow tape of vertical inductor	Pb	BL	/	PASS
		Cd	BL	/	
		Hg	BL	/	
		Cr(Cr(VI) )	BL	/	
		Br(PBBs&PBDEs)	BL	/	
91	Plastic frame of vertical inductor	Pb	BL	/	PASS
		Cd	BL	/	
		Hg	BL	/	
		Cr(Cr(VI) )	BL	/	
		Br(PBBs&PBDEs)	BL	/	
92	Magnetic core of vertical inductor	Pb	BL	/	PASS
		Cd	BL	/	
		Hg	BL	/	
		Cr(Cr(VI) )	BL	/	
		Br(PBBs&PBDEs)	/	/	
93	Copper coil of vertical inductor	Pb	BL	/	PASS
		Cd	BL	/	
		Hg	BL	/	
		Cr(Cr(VI) )	BL	/	
		Br(PBBs&PBDEs)	/	/	
94	Metal pin of vertical inductor	Pb	BL	/	PASS
		Cd	BL	/	
		Hg	BL	/	
		Cr(Cr(VI) )	BL	/	
		Br(PBBs&PBDEs)	/	/	
95	Silvery metal shell of vertical inductor	Pb	BL	/	PASS
		Cd	BL	/	
		Hg	BL	/	
		Cr(Cr(VI) )	IN	Negative	
		Br(PBBs&PBDEs)	/	/	
96	Aluminum shell of blue electrolytic capacitor	Pb	BL	/	PASS
		Cd	BL	/	
		Hg	BL	/	
		Cr(Cr(VI) )	BL	/	
		Br(PBBs&PBDEs)	/	/	
97	Anode foil of blue electrolytic capacitor	Pb	BL	/	PASS
		Cd	BL	/	
		Hg	BL	/	
		Cr(Cr(VI) )	BL	/	
		Br(PBBs&PBDEs)	/	/	



98	Cathode foil of blue electrolytic capacitor	Pb	BL	/	PASS
		Cd	BL	/	
		Hg	BL	/	
		Cr(Cr(VI) )	BL	/	
		Br(PBBs&PBDEs)	/	/	
99	Electrolytic paper of blue electrolytic capacitor	Pb	BL	/	PASS
		Cd	BL	/	
		Hg	BL	/	
		Cr(Cr(VI) )	BL	/	
		Br(PBBs&PBDEs)	BL	/	
100	Rubber blanket of blue electrolytic capacitor	Pb	BL	/	PASS
		Cd	BL	/	
		Hg	BL	/	
		Cr(Cr(VI) )	BL	/	
		Br(PBBs&PBDEs)	BL	/	
101	Metal pin of blue electrolytic capacitor	Pb	BL	/	PASS
		Cd	BL	/	
		Hg	BL	/	
		Cr(Cr(VI) )	BL	/	
		Br(PBBs&PBDEs)	/	/	
102	Metal contact sheet of blue electrolytic capacitor	Pb	BL	/	PASS
		Cd	BL	/	
		Hg	BL	/	
		Cr(Cr(VI) )	BL	/	
		Br(PBBs&PBDEs)	/	/	
103	Plastic jacket of blue electrolytic capacitor	Pb	BL	/	PASS
		Cd	BL	/	
		Hg	BL	/	
		Cr(Cr(VI) )	BL	/	
		Br(PBBs&PBDEs)	BL	/	
104	Metal pin of blue capacitor	Pb	BL	/	PASS
		Cd	BL	/	
		Hg	BL	/	
		Cr(Cr(VI) )	BL	/	
		Br(PBBs&PBDEs)	/	/	
105	Blue body of blue capacitor	Pb	BL	/	PASS
		Cd	BL	/	
		Hg	BL	/	
		Cr(Cr(VI) )	BL	/	
		Br(PBBs&PBDEs)	BL	/	



106	Black body of black thermistor	Pb	BL	/	PASS
		Cd	BL	/	
		Hg	BL	/	
		Cr(Cr(VI) )	BL	/	
		Br(PBBs&PBDEs)	BL	/	
107	Metal pin of black thermistor	Pb	BL	/	PASS
		Cd	BL	/	
		Hg	BL	/	
		Cr(Cr(VI) )	BL	/	
		Br(PBBs&PBDEs)	/	/	
108	Black body of diode	Pb	BL	/	PASS
		Cd	BL	/	
		Hg	BL	/	
		Cr(Cr(VI) )	BL	/	
		Br(PBBs&PBDEs)	BL	/	
109	Metal pin of diode	Pb	BL	/	PASS
		Cd	BL	/	
		Hg	BL	/	
		Cr(Cr(VI) )	BL	/	
		Br(PBBs&PBDEs)	/	/	
110	Plastic frame of transformer	Pb	BL	/	PASS
		Cd	BL	/	
		Hg	BL	/	
		Cr(Cr(VI) )	BL	/	
		Br(PBBs&PBDEs)	BL	/	
111	Magnet core of transformer	Pb	BL	/	PASS
		Cd	BL	/	
		Hg	BL	/	
		Cr(Cr(VI) )	BL	/	
		Br(PBBs&PBDEs)	/	/	
112	Cupreous metal coil of transformer	Pb	BL	/	PASS
		Cd	BL	/	
		Hg	BL	/	
		Cr(Cr(VI) )	BL	/	
		Br(PBBs&PBDEs)	/	/	
113	Varnished wire of transformer	Pb	BL	/	PASS
		Cd	BL	/	
		Hg	BL	/	
		Cr(Cr(VI) )	BL	/	
		Br(PBBs&PBDEs)	BL	/	





114	Metal pin of transformer	Pb	BL	/	PASS
		Cd	BL	/	
		Hg	BL	/	
		Cr(Cr(VI) )	BL	/	
		Br(PBBs&PBDEs)	/	/	
115	Transparent casing tube of transformer	Pb	BL	/	PASS
		Cd	BL	/	
		Hg	BL	/	
		Cr(Cr(VI) )	BL	/	
		Br(PBBs&PBDEs)	BL	/	
116	Copper foil of transformer	Pb	BL	/	PASS
		Cd	BL	/	
		Hg	BL	/	
		Cr(Cr(VI) )	BL	/	
		Br(PBBs&PBDEs)	/	/	
117	Yellow tape of transformer	Pb	BL	/	PASS
		Cd	BL	/	
		Hg	BL	/	
		Cr(Cr(VI) )	BL	/	
		Br(PBBs&PBDEs)	BL	/	
118	Magnetic core of inductor	Pb	BL	/	PASS
		Cd	BL	/	
		Hg	BL	/	
		Cr(Cr(VI) )	BL	/	
		Br(PBBs&PBDEs)	/	/	
119	CoilBlack rubber sleeve	Pb	BL	/	PASS
		Cd	BL	/	
		Hg	BL	/	
		Cr(Cr(VI) )	BL	/	
		Br(PBBs&PBDEs)	/	/	
120	Black rubber sleeveBlack rubber sleeve	Pb	BL	/	PASS
		Cd	BL	/	
		Hg	BL	/	
		Cr(Cr(VI) )	BL	/	
		Br(PBBs&PBDEs)	BL	/	
121	Aluminum shell of black electrolytic capacitor	Pb	BL	/	PASS
		Cd	BL	/	
		Hg	BL	/	
		Cr(Cr(VI) )	BL	/	
		Br(PBBs&PBDEs)	/	/	



122	Anode foil of black electrolytic capacitor	Pb	BL	/	PASS
		Cd	BL	/	
		Hg	BL	/	
		Cr(Cr(VI) )	BL	/	
		Br(PBBs&PBDEs)	/	/	
123	Cathode foil of black electrolytic capacitor	Pb	BL	/	PASS
		Cd	BL	/	
		Hg	BL	/	
		Cr(Cr(VI) )	BL	/	
		Br(PBBs&PBDEs)	/	/	
124	Electrolytic paper of black electrolytic capacitor	Pb	BL	/	PASS
		Cd	BL	/	
		Hg	BL	/	
		Cr(Cr(VI) )	BL	/	
		Br(PBBs&PBDEs)	BL	/	
125	Rubber blanket of black electrolytic capacitor	Pb	BL	/	PASS
		Cd	BL	/	
		Hg	BL	/	
		Cr(Cr(VI) )	BL	/	
		Br(PBBs&PBDEs)	BL	/	
126	Metal pin of black electrolytic capacitor	Pb	BL	/	PASS
		Cd	BL	/	
		Hg	BL	/	
		Cr(Cr(VI) )	BL	/	
		Br(PBBs&PBDEs)	/	/	
127	Metal contact sheet of black electrolytic capacitor	Pb	BL	/	PASS
		Cd	BL	/	
		Hg	BL	/	
		Cr(Cr(VI) )	BL	/	
		Br(PBBs&PBDEs)	/	/	
128	Plastic jacket of black electrolytic capacitor	Pb	BL	/	PASS
		Cd	BL	/	
		Hg	BL	/	
		Cr(Cr(VI) )	BL	/	
		Br(PBBs&PBDEs)	BL	/	
129	Black plastic of black slot	Pb	BL	/	PASS
		Cd	BL	/	
		Hg	BL	/	
		Cr(Cr(VI) )	BL	/	
		Br(PBBs&PBDEs)	IN	N.D.	



130	Metal plug pin of black slot	Pb	BL	/	PASS
		Cd	BL	/	
		Hg	BL	/	
		Cr(Cr(VI) )	BL	/	
		Br(PBBs&PBDEs)	/	/	
131	Black body of optocoupler	Pb	BL	/	PASS
		Cd	BL	/	
		Hg	BL	/	
		Cr(Cr(VI) )	BL	/	
		Br(PBBs&PBDEs)	IN	N.D.	
132	Metal pin of optocoupler	Pb	BL	/	PASS
		Cd	BL	/	
		Hg	BL	/	
		Cr(Cr(VI) )	BL	/	
		Br(PBBs&PBDEs)	/	/	
133	Black body of rectifier bridge	Pb	BL	/	PASS
		Cd	BL	/	
		Hg	BL	/	
		Cr(Cr(VI) )	BL	/	
		Br(PBBs&PBDEs)	IN	N.D.	
134	Metal pin of rectifier bridge	Pb	BL	/	PASS
		Cd	BL	/	
		Hg	BL	/	
		Cr(Cr(VI) )	BL	/	
		Br(PBBs&PBDEs)	/	/	
135	Black body of SUF4007 diode	Pb	BL	/	PASS
		Cd	BL	/	
		Hg	BL	/	
		Cr(Cr(VI) )	BL	/	
		Br(PBBs&PBDEs)	IN	N.D.	
136	Metal pin of SUF4007 diode	Pb	BL	/	PASS
		Cd	BL	/	
		Hg	BL	/	
		Cr(Cr(VI) )	BL	/	
		Br(PBBs&PBDEs)	/	/	
137	Chip 1	Pb	BL	/	PASS
		Cd	BL	/	
		Hg	BL	/	
		Cr(Cr(VI) )	BL	/	
		Br(PBBs&PBDEs)	BL	/	



138	SMD resistor	Pb	BL	/	PASS
		Cd	BL	/	
		Hg	BL	/	
		Cr(Cr(VI) )	BL	/	
		Br(PBBs&PBDEs)	BL	/	
139	SMD capacitor	Pb	BL	/	PASS
		Cd	BL	/	
		Hg	BL	/	
		Cr(Cr(VI) )	BL	/	
		Br(PBBs&PBDEs)	BL	/	
140	SMD diode	Pb	BL	/	PASS
		Cd	BL	/	
		Hg	BL	/	
		Cr(Cr(VI) )	BL	/	
		Br(PBBs&PBDEs)	IN	N.D.	
141	Glass diode of SMD	Pb	OL	154980 <sup>#2</sup>	PASS
		Cd	BL	/	
		Hg	BL	/	
		Cr(Cr(VI) )	BL	/	
		Br(PBBs&PBDEs)	BL	/	
142	Crystal oscillator	Pb	BL	/	PASS
		Cd	BL	/	
		Hg	BL	/	
		Cr(Cr(VI) )	BL	/	
		Br(PBBs&PBDEs)	/	/	
143	Silvery metal IC protective shell	Pb	BL	/	PASS
		Cd	BL	/	
		Hg	BL	/	
		Cr(Cr(VI) )	BL	/	
		Br(PBBs&PBDEs)	/	/	

6. Battery

Sample No.	Sample Description	Tested Items	XRF Screening Test	Chemical Test (mg/kg)	Conclusion
144	White plastic port	Pb	BL	/	PASS
		Cd	BL	/	
		Hg	BL	/	
		Cr(Cr(VI) )	BL	/	
		Br(PBBs&PBDEs)	BL	/	



145	Red wire jacket	Pb	BL	/	PASS
		Cd	BL	/	
		Hg	BL	/	
		Cr(Cr(VI) )	BL	/	
		Br(PBBs&PBDEs)	BL	/	
146	Black wire jacket	Pb	BL	/	PASS
		Cd	BL	/	
		Hg	BL	/	
		Cr(Cr(VI) )	BL	/	
		Br(PBBs&PBDEs)	BL	/	
147	Core of wire	Pb	BL	/	PASS
		Cd	BL	/	
		Hg	BL	/	
		Cr(Cr(VI) )	BL	/	
		Br(PBBs&PBDEs)	/	/	
148	Yellow tape	Pb	BL	/	PASS
		Cd	BL	/	
		Hg	BL	/	
		Cr(Cr(VI) )	BL	/	
		Br(PBBs&PBDEs)	BL	/	
149	PCB	Pb	BL	/	PASS
		Cd	BL	/	
		Hg	BL	/	
		Cr(Cr(VI) )	BL	/	
		Br(PBBs&PBDEs)	BL	/	
150	SMD capacitance	Pb	BL	/	PASS
		Cd	BL	/	
		Hg	BL	/	
		Cr(Cr(VI) )	BL	/	
		Br(PBBs&PBDEs)	BL	/	
151	SMD resistor	Pb	BL	/	PASS
		Cd	BL	/	
		Hg	BL	/	
		Cr(Cr(VI) )	BL	/	
		Br(PBBs&PBDEs)	BL	/	
152	Chip 1	Pb	BL	/	PASS
		Cd	BL	/	
		Hg	BL	/	
		Cr(Cr(VI) )	BL	/	
		Br(PBBs&PBDEs)	BL	/	

153	Chip 2	Pb	BL	/	PASS
		Cd	BL	/	
		Hg	BL	/	
		Cr(Cr(VI) )	BL	/	
		Br(PBBs&PBDEs)	BL	/	
154	Silvery metal contact sheet	Pb	BL	/	PASS
		Cd	BL	/	
		Hg	BL	/	
		Cr(Cr(VI) )	BL	/	
		Br(PBBs&PBDEs)	/	/	
155	Tin solder	Pb	BL	/	PASS
		Cd	BL	/	
		Hg	BL	/	
		Cr(Cr(VI) )	BL	/	
		Br(PBBs&PBDEs)	/	/	

Note:

- N.D. = Not Detected (<MDL)
- MDL = Method Detection Limit
- mg/kg = ppm = parts per million
- /=Not Regulated or Not Applicable
- BL = Under the XRF screening limit
- IN = Further chemical test will be conducted when the screening result inconclusive
- OL = Further chemical test will be conducted while the result is above the screening limit.
- Negative = Absence of Cr(VI) , the detected Cr(VI) concentration in the boiling water extraction solution is less than 0.10  $\mu\text{g}/\text{cm}^2$  with 50 $\text{cm}^2$  sample surface area used.
- Positive = Presence of Cr(VI), the detected Cr(VI) concentration in the boiling water extraction solution is equal to or greater than 0.13  $\mu\text{g}/\text{cm}^2$  with 50 $\text{cm}^2$  sample surface area used.

Remark:

- 1.The screening results are only used for reference.
- 2.When conducting the test for PBBs&PBDEs, XRF was introduced to screen Br Exclusively; When conducting the test for Hexavalent Chromium, XRF was introduced to screen Chromium exclusively.
- 3.According to directive 2011/65/EU and 2011/534/EU.
  - #1 Lead is exempted as copper alloy containing up to 4% lead by weight
  - #2 Lead is exempted as Electrical and electronic components containing lead in a glass or ceramic other than dielectric ceramic in capacitors, e.g. piezoelectronic devices, or in a glass or ceramic matrix compound



**The Battery (Test result)**

Test Items	Sample concentration (mg/kg)	MDL (mg/kg)	Standard requirement,mg/kg
	1		
Lead(Pb)	N.D.	2	<40*
Cadmium(Cd)	N.D.	2	<20
Mercury(Hg)	N.D.	2	<5
Result (P/F)	P		

**Sample Description:**

1: Battery

- Note:
- N.D. = (Not Detected) (<MDL)
  - MDL = (Method Detection Limit)
  - mg/kg = ppm = 0.0001%
  - /= Not Regulated or Not Applicable
  - P=Pass
  - F=Fail

Remark: According to EU Directive 2006/66/EC and amendment 2013/56/EU

1. Without prejudice to directive 2000/53/EC, Member States shall prohibit the placing on the market of:
  - (a)all batteries or accumulators, whether or not incorporated into appliances, that contain more than 0.0005% of mercury by weight.
  - (b)portable batteries or accumulators, including those incorporated into appliances, that contain more than 0.002% of cadmium by weight.
2. The prohibition set out in paragraph 1(b) shall not apply to portable batteries and accumulators intended for use in:
  - (a)emergency and alarm systems, including emergency lighting; or
  - (b)medical equipment.
3. Batteries, accumulators and button cells containing more than 0.004% of lead, shall be marked with the chemical symbol for the metal concerned: Pb.

**Test Method:**

## 1. Screening test by XRF spectroscopy

XRF screening limits in mg/kg for regulated elements according to IEC 62321-3-1:2013

Element	Limit of IEC 62321-3-1:2013 (unit:mg/kg)		MDL	
	Polymers and metals	Composite material	Polymers	Other material
Pb	$BL \leq (700-3\sigma) < X$ $< (1300+3\sigma) \leq OL$	$BL \leq (500-3\sigma) < X$ $< (1500+3\sigma) \leq OL$	10 mg/kg	50 mg/kg
Cd	$BL \leq (70-3\sigma) < X$ $< (130+3\sigma) \leq OL$	LOD $< X < (150+3\sigma) \leq OL$	10 mg/kg	50 mg/kg
Hg	$BL \leq (700-3\sigma) < X$ $< (1300+3\sigma) \leq OL$	$BL \leq (500-3\sigma) < X$ $< (1500+3\sigma) \leq OL$	10 mg/kg	50 mg/kg
Cr	$BL \leq (700-3\sigma) < X$	$BL \leq (500-3\sigma) < X$	10 mg/kg	50 mg/kg
Br	$BL \leq (300-3\sigma) < X$	$BL \leq (250-3\sigma) < X$	10 mg/kg	50 mg/kg

Note: -BL = Under the XRF screening limit

-OL = Further chemical test will be conducted while result is above the screening limit.

-X= The symbol "X" marks the region where further investigation is necessary.

-3σ= The reproducibility of analytical instruments

-LOD= Detection limit

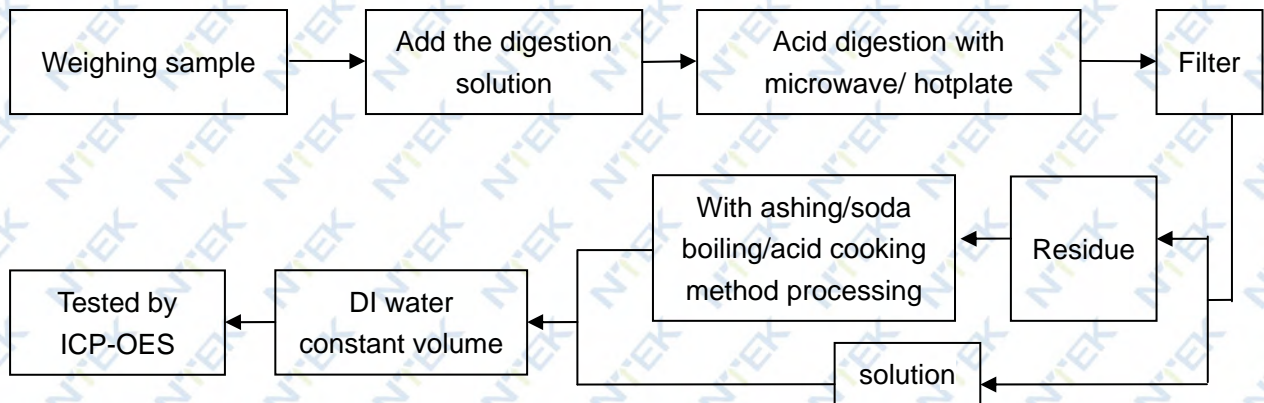
## 2. Chemical Test

Test item	Pretreatment method	Test instrument	MDL	Limit
Lead(Pb)	IEC 62321-5:2013 Ed.1.0	ICP-OES	2 mg/kg	1000 mg/kg
Cadmium(Cd)	IEC 62321-5:2013 Ed.1.0	ICP-OES	2 mg/kg	100 mg/kg
Mercury(Hg)	IEC 62321-4:2013 Ed.1.0	ICP-OES	2 mg/kg	1000 mg/kg
Chromium VI (Cr VI)	IEC 62321:2008 Ed.1.0 & IEC 62321-7-1:2015 Ed.1.0	UV-Vis	2 mg/kg	1000 mg/kg
PBBs/ PBDEs	IEC 62321-6:2015 Ed.1.0	GC-MS	5 mg/kg	1000 mg/kg

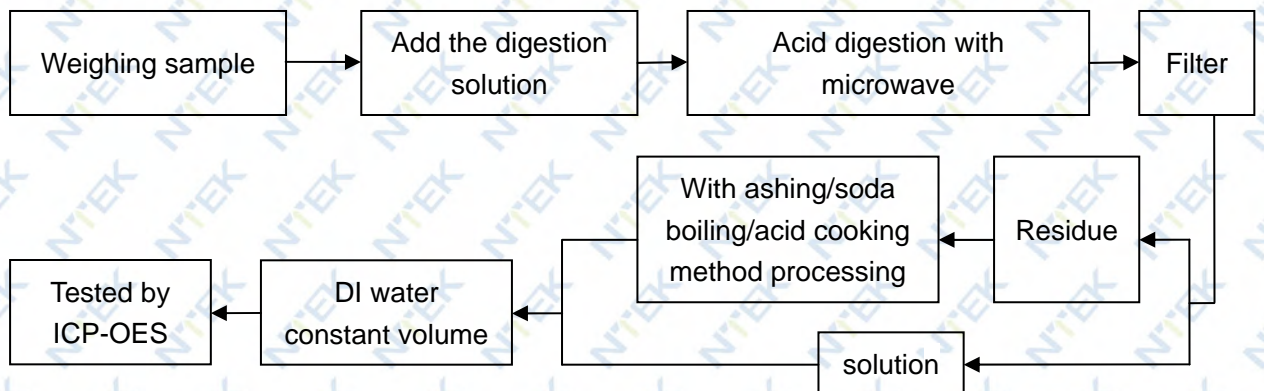


**Test Flow:**

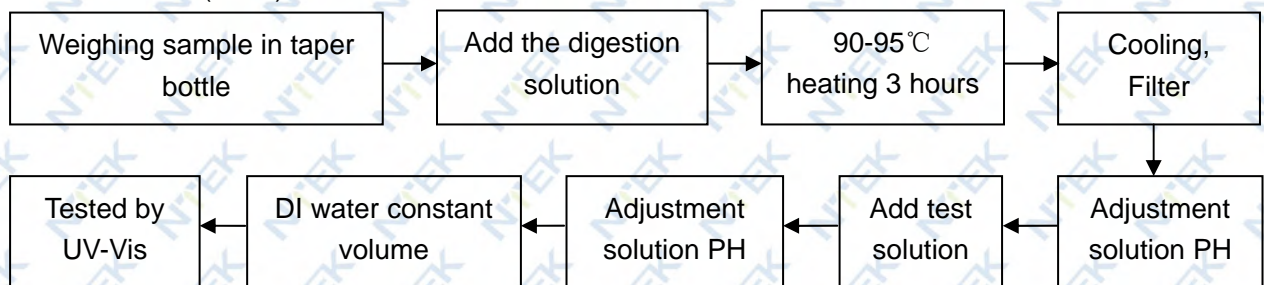
**1. Lead(Pb), Cadmium(Cd)**



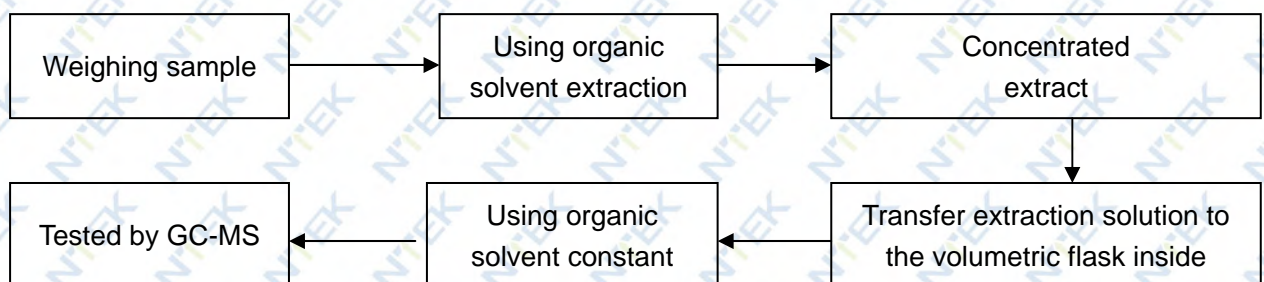
**2. Mercury (Hg)**



**3. Chromium VI(Cr VI)**



**4. PBBs/ PBDEs**



Sample photo(s):



Fig.1



Fig.2



Fig.3



Fig.4



Fig.5

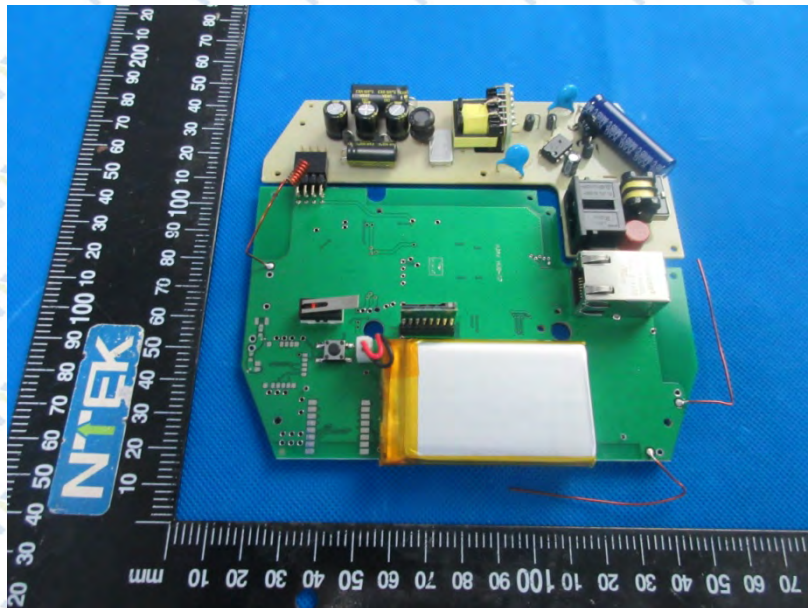


Fig.6



Fig.7

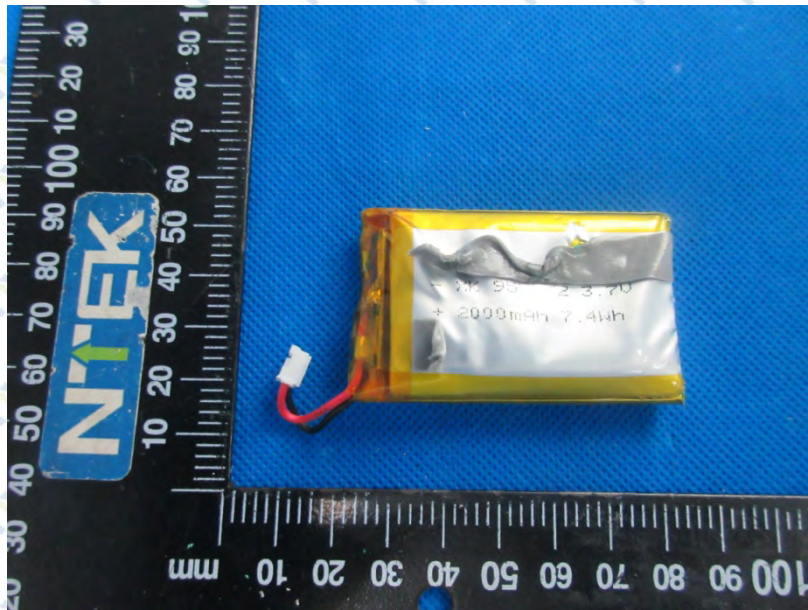


Fig.8

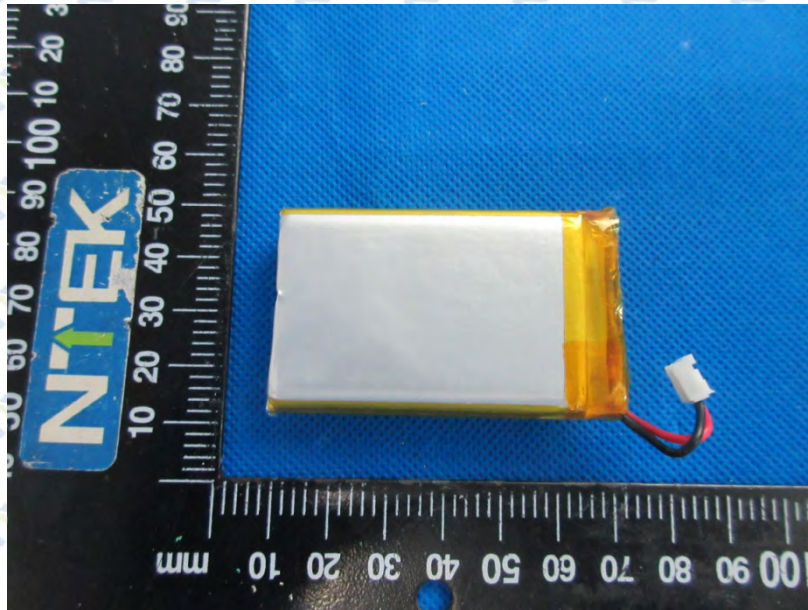


Fig.9

\*\*\*\*End of Report\*\*\*\*

The test report is effective only with both signature and specialized stamp, The result(s) shown in this report refer only to the sample(s) tested. Without written approval of NTEK, this report can't be reproduced except in full.