



# **EUROPEAN TECHNICAL CENTER**

## **FIRMWARE RELEASE NOTE**

# Two-Wire IP Video Intercom



DS-KV8103-IME2  
Door Station



DS-KH8340-TCE2  
Indoor Station



DS-KAD709  
2 Wire Distributor

## Firmware Release Notes

## Build 181105

Supported Models DS-KH8340-TCE2	Firmware Version	VIS_01_E3_EN_STD_V1.4.45_181105.zip
Supported Models DS-KV8103-IME2	Firmware Version	VIS_01_A1_EN_STD_V2.0.0_181029.zip
iVMS4200 Version		V2.7.1.9 build 20180604

### Note:

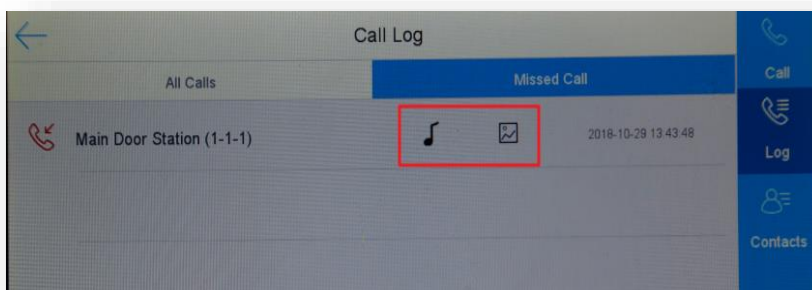
- ❖ After upgrading to new firmware, manually restore default setting for fully upgrade.

### Reason of Upgrade

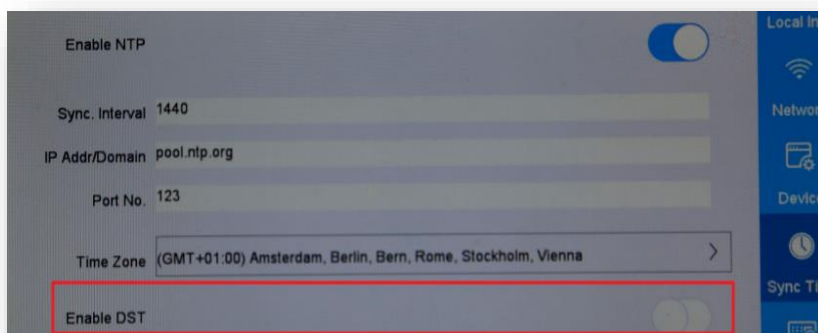
Added or modified functions, enhance products quality and meet customers' requirements

### New Features

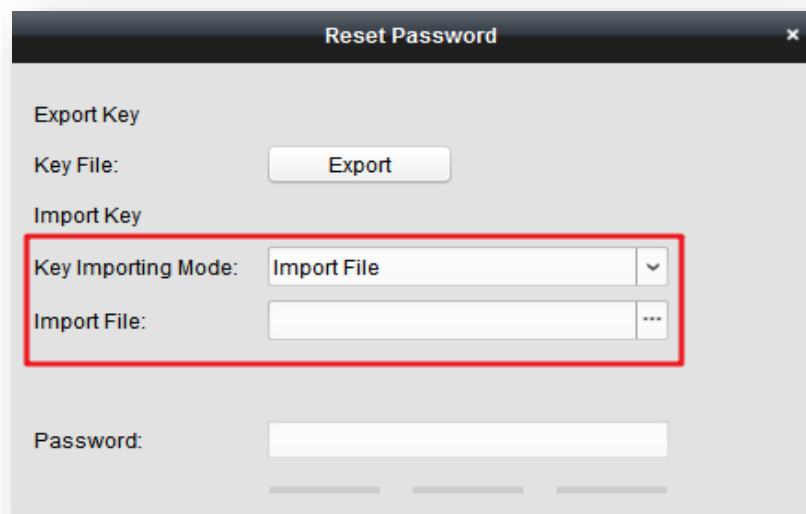
1. Added Hungarian and Romanian languages for GUI and voice prompts.
2. Captured photos and voice messages are linked directly with the missed call:



3. Added DST settings for NTP:



**4. Support of importing .XML file for resetting device activation password via SADP or iVMS-4200:**



**Modified Features**

1. Deleted voice prompts for busy call, call timeout, reject call and missed call. Replaced with three beep tone indicating call is busy.
2. Device will not reboot after choosing language during the activation wizard.

**Bug Fixes**

1. Fixed incorrect language translations and displaying errors.
2. Fixed DHCP bug by changing the synchronization mechanism between door and indoor station.

## Build 180821

Supported Models DS-KH8340-TCE2	Firmware Version	DZ20171020_052_21_E3_EN_STD_V1.4.45_180821.zip
Supported Models DS-KV8103-IME2	Firmware Version	DZ20171020_052_21_A1_EN_STD_V2.0.0_180821.zip
iVMS4200 Version		V2.8.1.4 build 20181124

### Note:

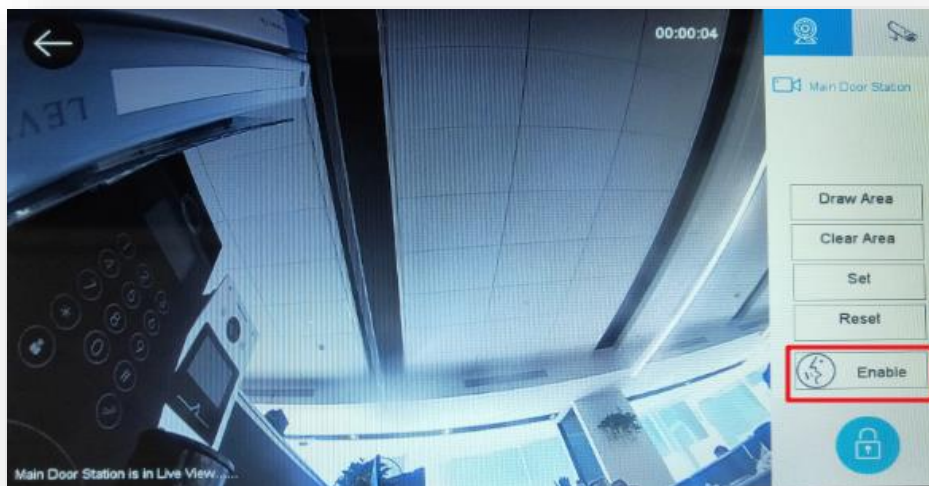
- ❖ After upgrading to new firmware, manually restore default setting for fully upgrade.

### Reason of Upgrade

Added or modified functions, enhance products quality and meet customers' requirements

### New Features

1. Added Czech, Dutch and Polish languages for GUI and voice prompts.
2. Added Enable 2-way audio button in live view:

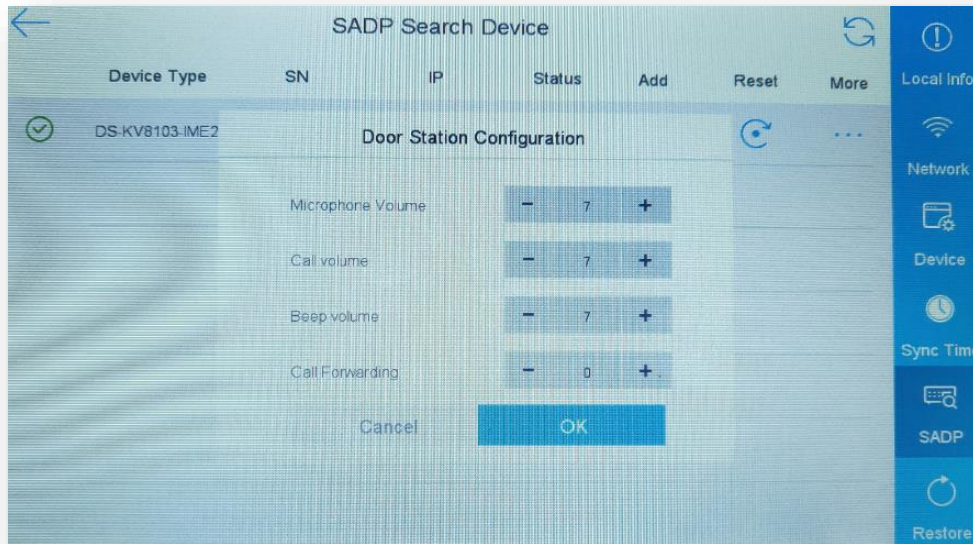


3. DHCP can be enable and disabled (enabled by default).
4. The door station will follow the same DHCP status as the main indoor station.

**5. Added additional door station settings in the SADP menu.**

In Settings->Configuration->SADP click the "More" button next to the door station to configure:

- Microphone volume
- Call Volume
- Beep (system sounds) volume
- Call forwarding delay to the Hik-Connect app



**6. "More" and "Reset" buttons in SADP menu of the indoor stations are disabled for Indoor extensions.**

**7. If the call button is pressed several times during the first 4 seconds the call will not be canceled.**

**Bug Fixes**

1. Fixed incorrect language translations and displaying errors.
2. Fixed system audio playing bug.
3. Fixed indoor station's frequently rebooting bug.
4. Fixed the bug where connection between door and indoor station will take too long when there is no LAN connection (no DHCP server).

## Build 180702

Supported Models DS-KH8340-TCE2	Firmware Version	DZ20171020_052_21_E3_EN_STD_V1.4.45_180702.zip
Supported Models DS-KV8103-IME2	Firmware Version	DZ20171020_052_21_A1_EN_STD_V2.0.0_180702.zip
iVMS4200 Version		V2.7.1.9 build 20180604

### Note:

❖ After upgrading to new firmware, manually restore default setting for fully upgrade.

### Reason of Upgrade

Added or modified functions, enhance products quality and meet customers' requirements

### New Features

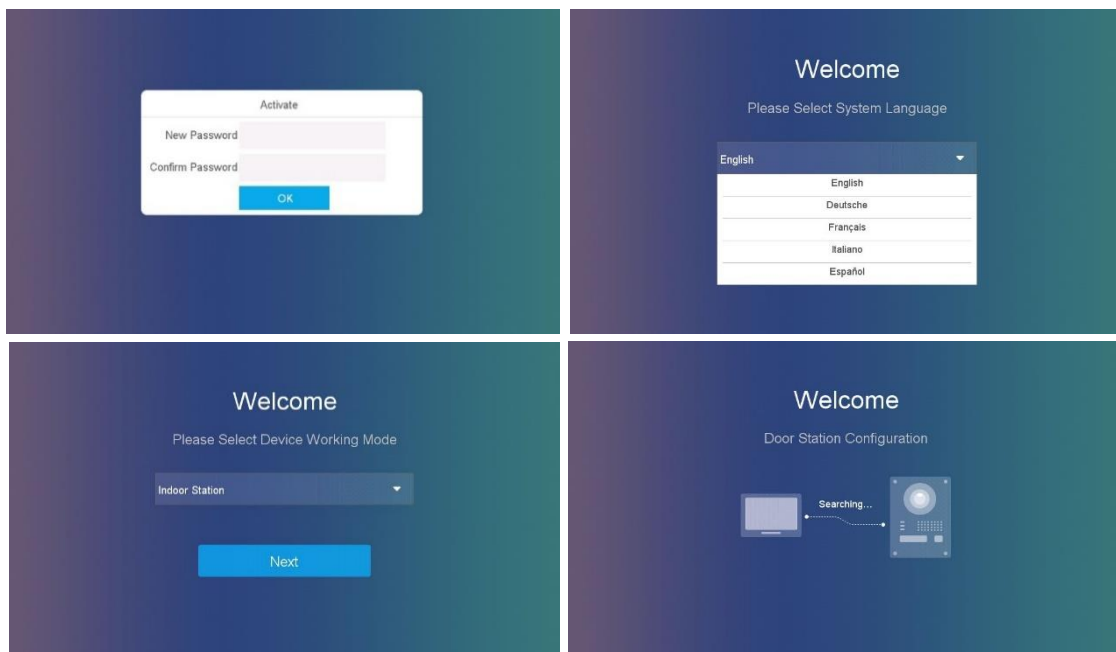
**1. Support 5 languages for GUI and voice prompts: English, Italian, German, French and Spanish.**

**2. Support one indoor station and up to five indoor extensions.**

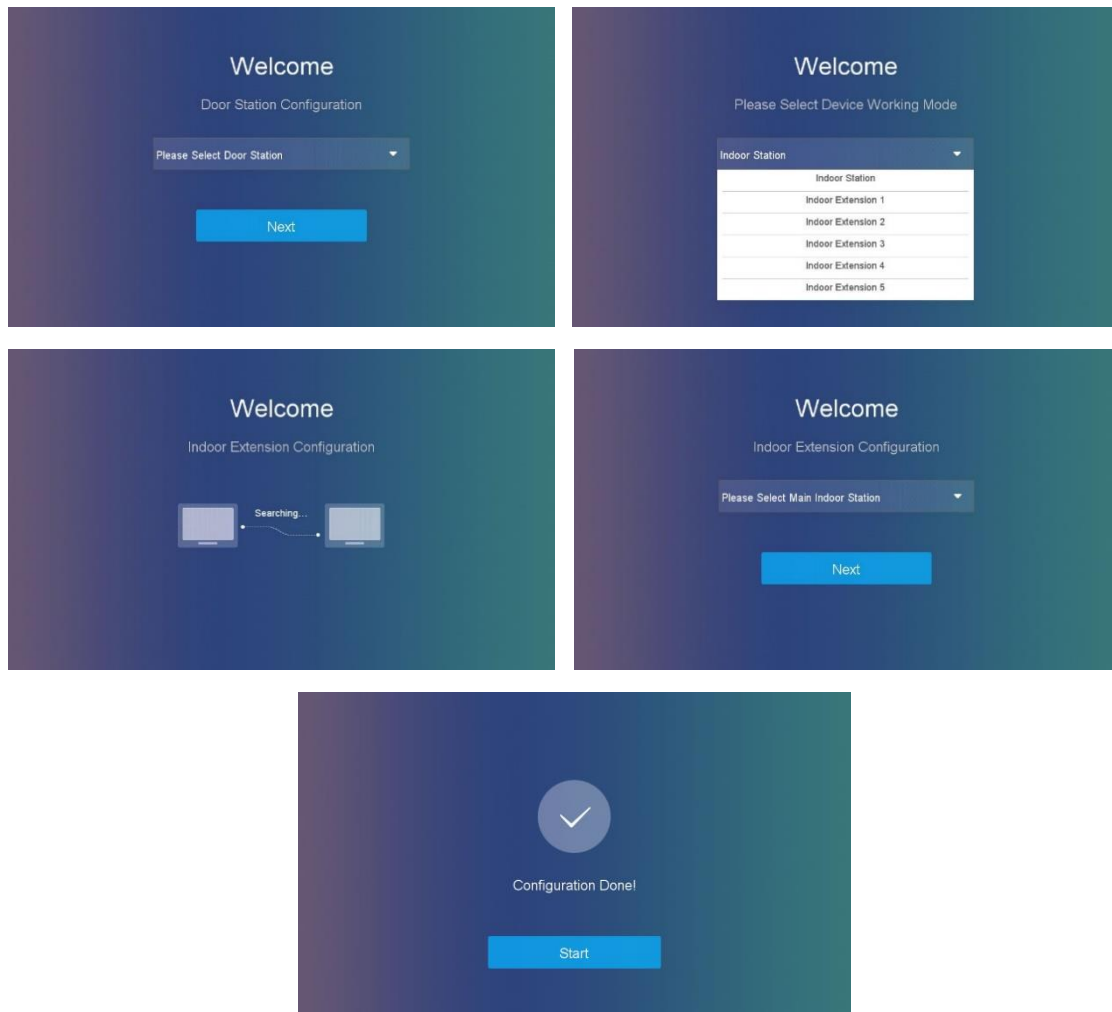
Indoor extensions (room No. range of indoor extensions: 1~5) can call each other by dialing Room No.

**3. Support Plug & play quick setup wizard**

If the device is powered out of the box or reset to factory defaults a simple configuration wizard will be displayed on the indoor station. Following the few steps will help user setup the system in no time without using any PC.



Connect door station to main indoor station



Connect indoor extension to main indoor station

**4. Main indoor station support SADP search tool.**

With SADP you can search out all the door/indoor stations in the same LAN, activate and add door station to indoor station, synchronize the language of door station with indoor station, adjust the volume of door station and restore it to the factory defaults.

**5. Capture photos manually or on call button pressed.**

When a visitor press the call button a photo will be captured and stored in Information->Picture menu (SD card required, hot swap is not supported)). Photos can also be captured manually in a call.

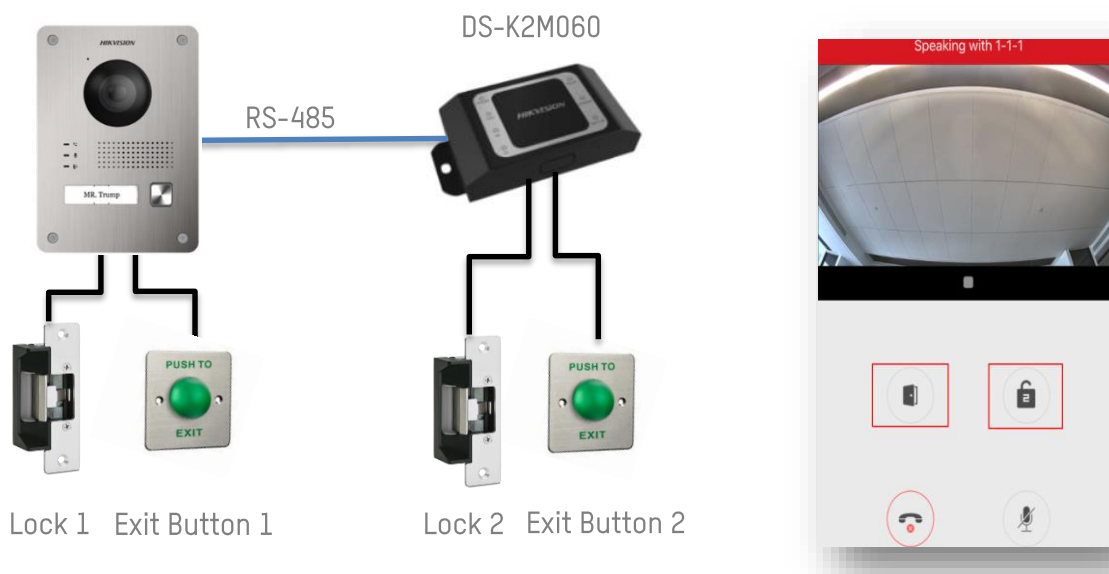
**6. Support leaving voice message,**

After configured calling duration the call is not answered door station will ask the visitor to leave a voice message with max. length 30 seconds (SD card required)



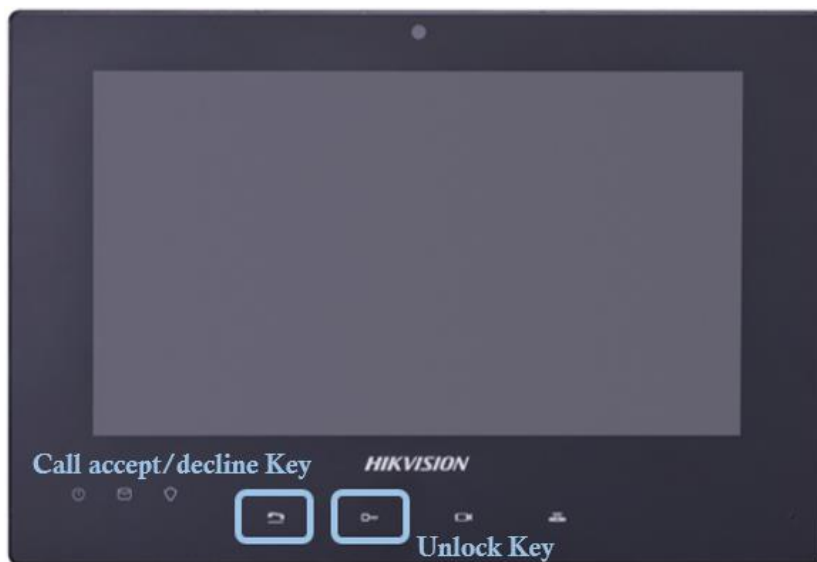
**7. Support second door relay expansion via DS-K2M060 secure door control module.**

Connect the secure door control module to door station via RS-485 to control a second relay for garage door, lights etc. via the indoor station, Hik-Connect or iVMS-4200.



**Note:** The secure module is plug and play. Call, accept/decline keys on the indoor station can only open the lock connect to door station.

**8. Support pressing indoor station Call accept/decline key to answer/hang up directly and unlock key to open door directly**



**9. Added factory reset function on the local interface of the indoor station**

**10. Support cropping/zooming fisheye image in live view.**

In case the door stations in a proximity to a wall on some of it sides the image can be zoomed and cropped to the region of interest.

## **Modified Features**

1. DHCP function of Indoor station and Door station is enabled by default.
2. Alarm module, call elevator module, call center module and notice function are deleted.
3. Add caps lock key to the device touch keyboard.
4. NTP is enabled by default. The default time zone is GMT+1, and the default NTP server is pool.ntp.org.
5. If the call button is pressed several times in period of 4 seconds the call will not be canceled.
6. Added missed call menu and captured photos menu when in indoor extension mode.

## **Customer Impact and Recommended Action**

This new firmware upgrade is to improve product performance, and will take effect automatically after upgrading from previous versions. We'd like to inform you for the above changes. Also, we are sorry for any possible inconvenience of use-habit changes caused by this action.

For questions or concerns, please contact our local technical support team.



### **Note:**

Hikvision has all rights to alter, modify and cancel this notice.

Hikvision doesn't give any guarantee for old models' stock.

Hikvision is not liable for any typing or printing errors.

For special model's change details, please contact our local technical support team.

Hikvision Digital Technology CO., Ltd.  
No. 555 Qianmo Road, Binjiang District, Hangzhou  
310052, China  
Tel: +86-571-8807-5998  
FAX: +86-571-8993-5635