

Indoor Station Firmware Release Note

(2025-02-07)

Device Model	DS-KH8350-WTE1, DS-KH8350-TE1, DS-KH6320-WTE1, DS-KH6320-TE1, DS-KH6320Y-WTE2, DS-KH6320EY-WTE2, DS-KH8520-WTE1, DS-KH6320-WTDE1, DS-KH6320-TDE1
Firmware Version	V2.2.100_build250114

Note: if the device firmware is earlier than V2.2.92_build241008, please upgrade to V2.2.92 or V2.2.96 first, and then upgrade to newer version, or the upgrade will be failed.

V2.2.92_build241008 firmware download link:

[https://drive.ticklink.com/hcs/controller/hik-manage/fileDownload?link=rd5ybkxE&](https://drive.ticklink.com/hcs/controller/hik-manage/fileDownload?link=rd5ybkxE&password:F0u8)

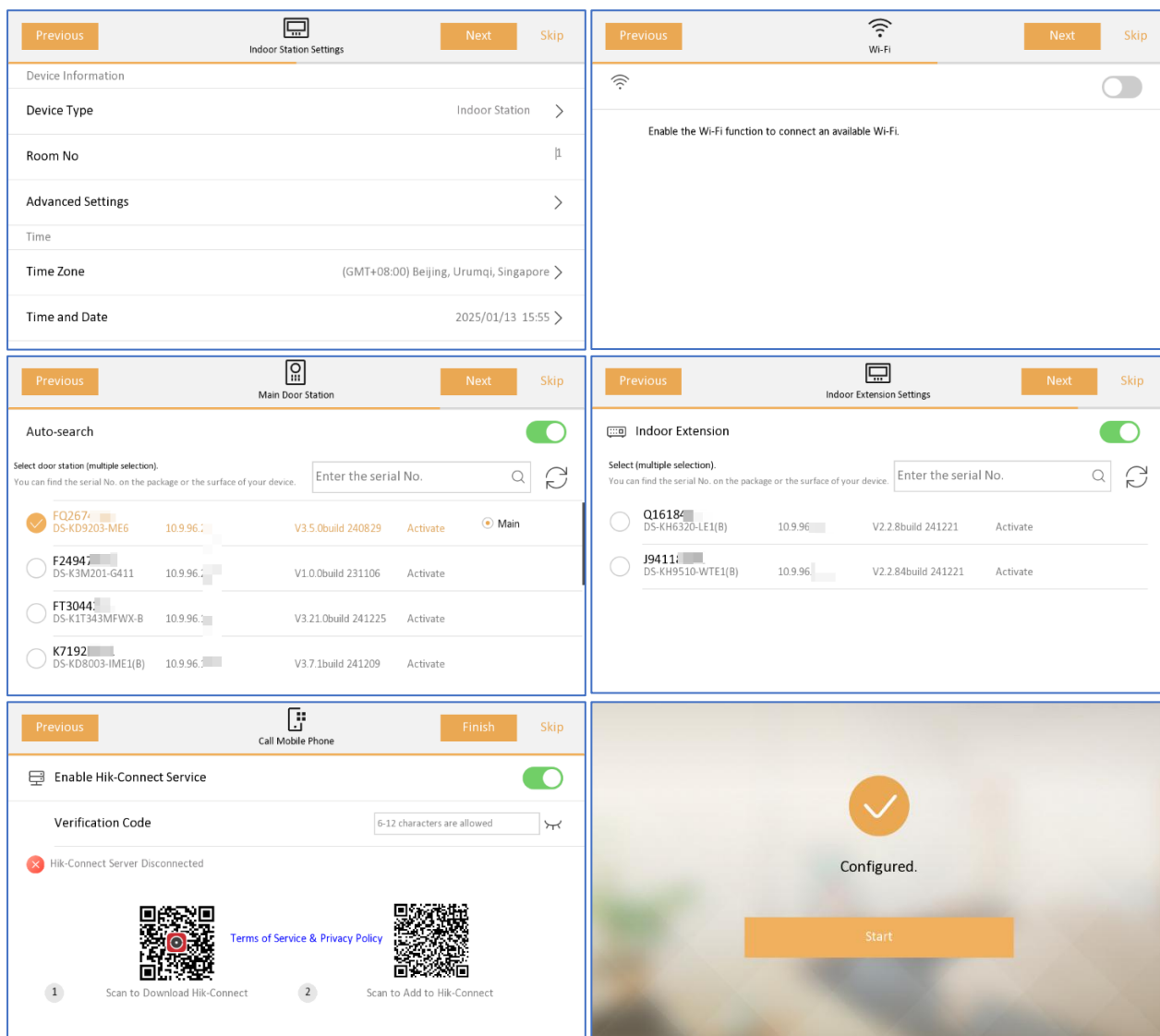
password: F0u8

New Features

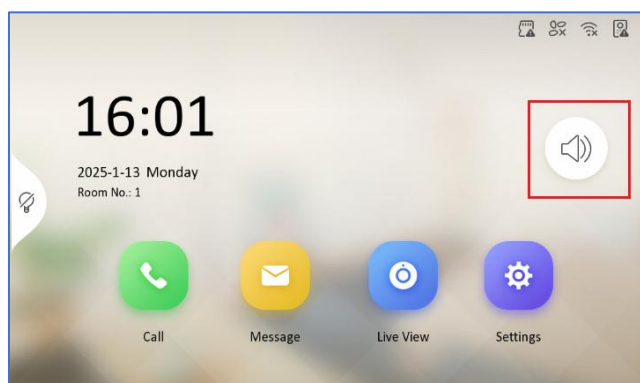
1. Optimized the wizard UI

The screenshots illustrate the following UI changes:

- Language Selection:** A grid of language buttons (English, Русский, български, Magyar, Ελληνικά, Deutsch, Italiano, Český, Slovenčina, Français, Polski, Nederland, Português (Brasil), Español, עברית, România, Türkçe, 繁體中文) with a 'Next' button.
- Password Setup:** A 'Welcome' screen with password input fields, a strength indicator (Weak), and a 'Next' button.
- Network Settings:** A screen with 'Previous', 'Next', and 'Skip' buttons, and a list of network settings (DHCP, IPv4 Address, IPv4 Subnet Mask, IPv4 Default Gateway) with toggle switches and input fields.
- Note Dialog:** A modal dialog box with the text: "Note: Enable to assign IP address automatically. Do not enable the function if DHCP is not supported by the connected PoE or router." with 'Cancel' and 'OK' buttons.

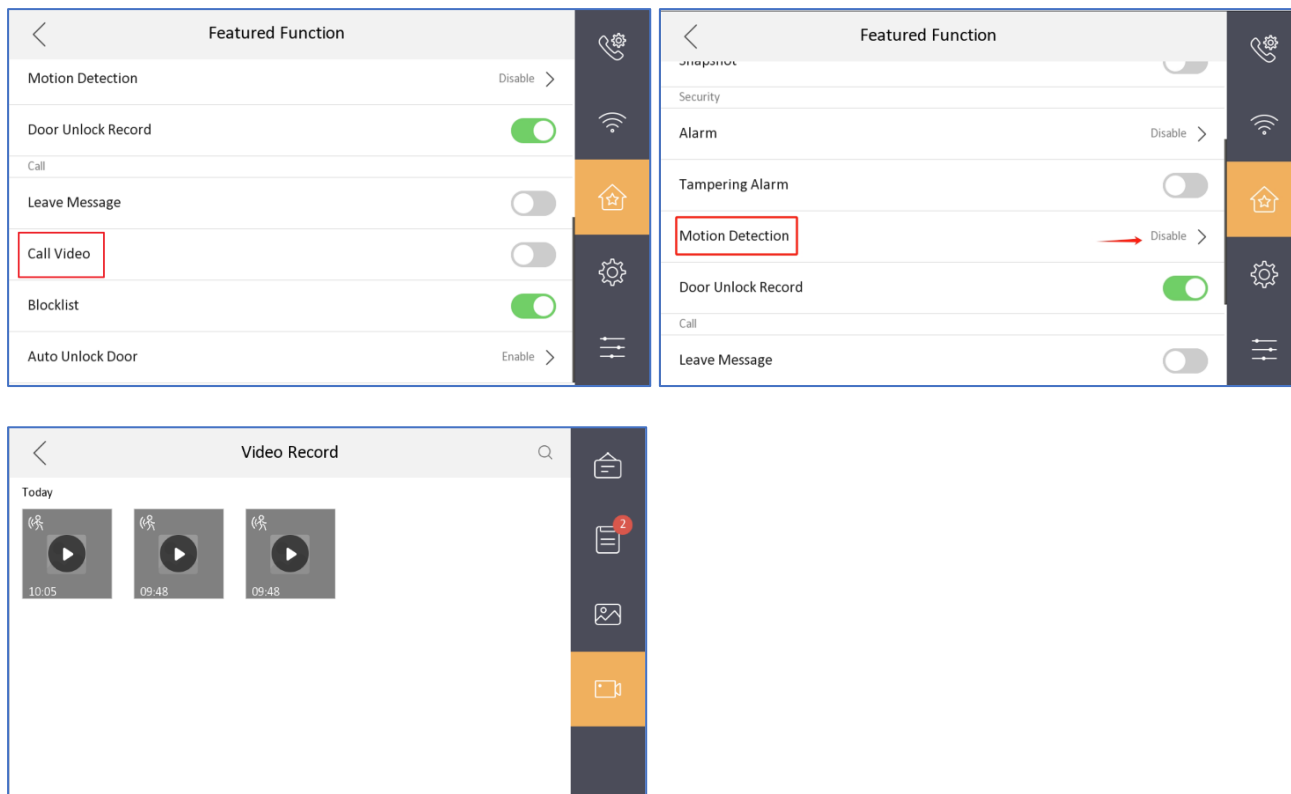


2. Support one key mute on home page.



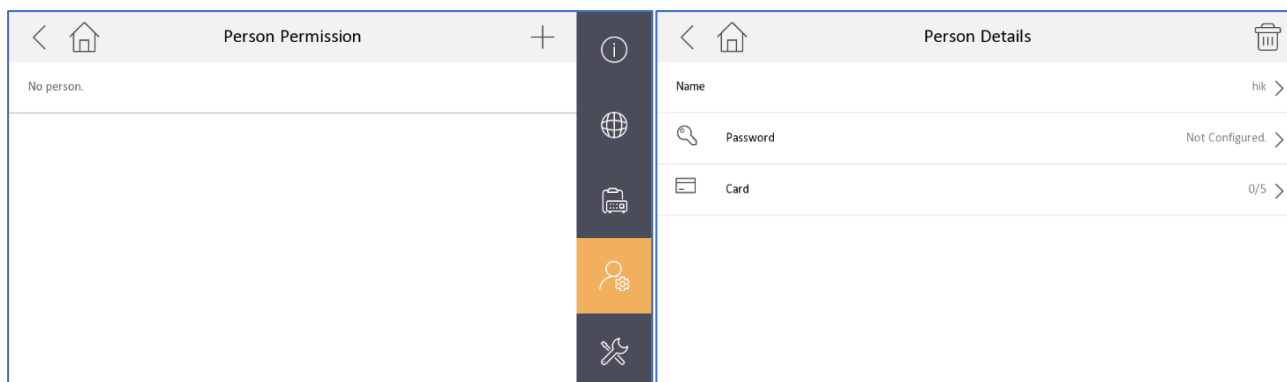
3. Support recording video of motion, intercom call on TF card and playback on indoor station local.
Note: a. Please enable motion detection in the door station in advance before motion recording function.

- b. Limited by device internal storage capacity, the video can only be stored inside TF card
- c. Video size: a 3 minutes motion video(sub stream) will occupy about 10MB TF card capacity;

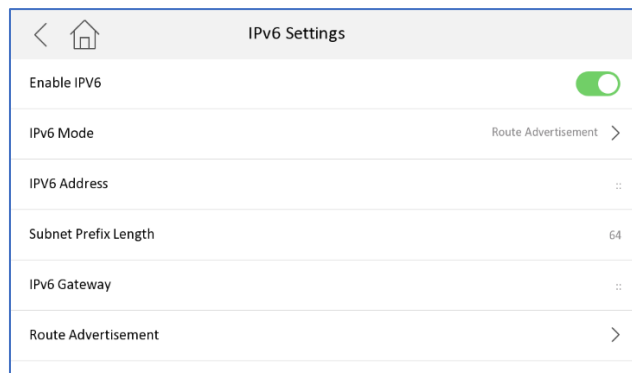


4. Support add and manage door station user (card and password) on indoor station.

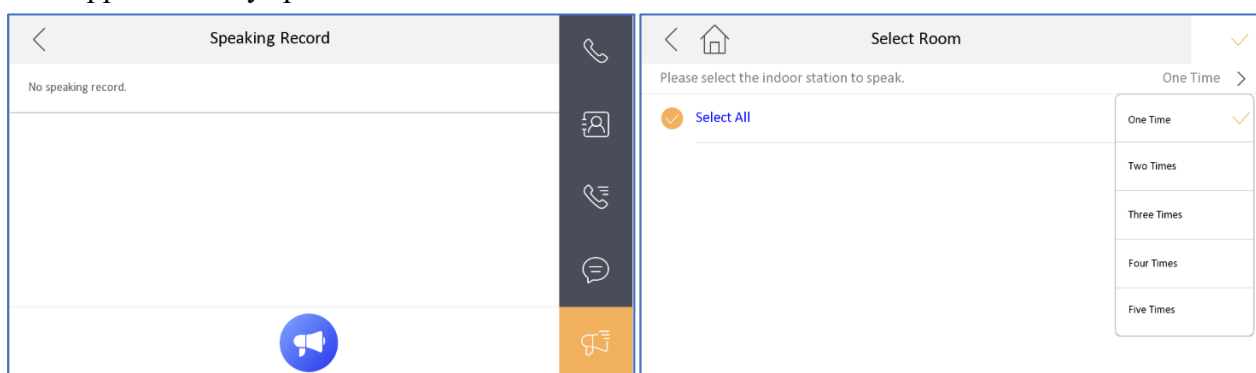
Note: please make sure door station support this function and use latest firmware.



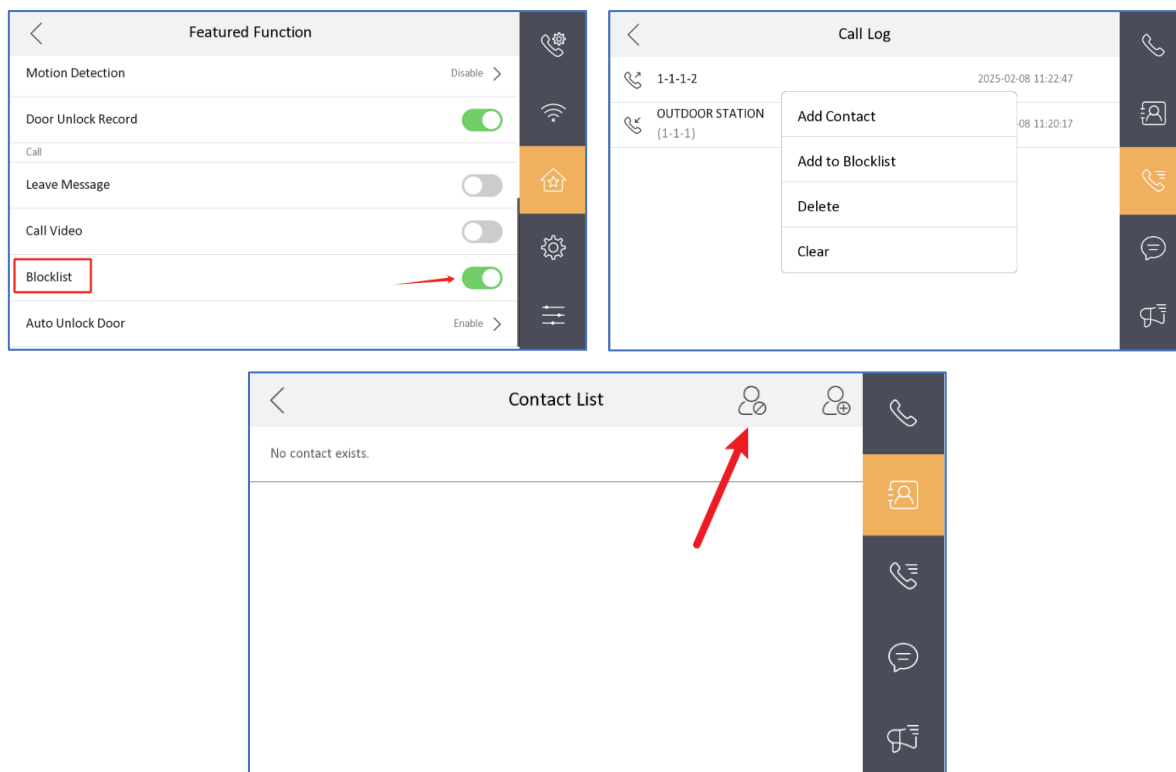
5. Support IPv6 network for SDK/RTSP/SADP protocol



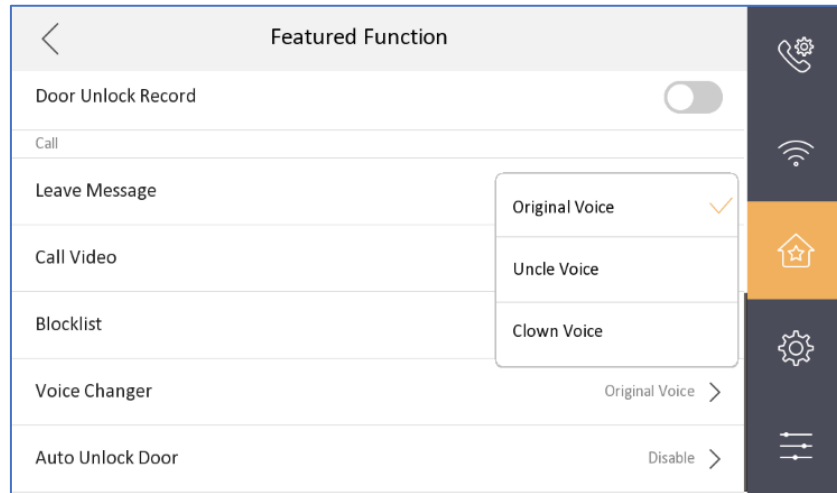
6. Support one key speak between indoor station and extension in same house.



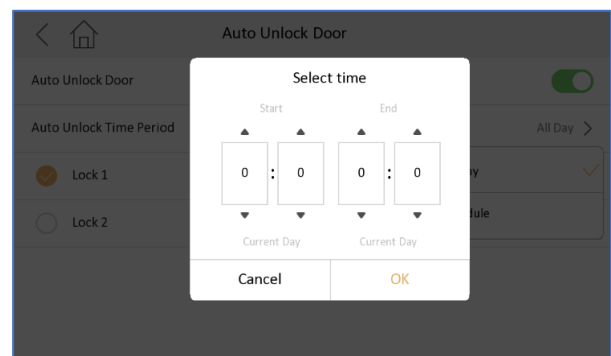
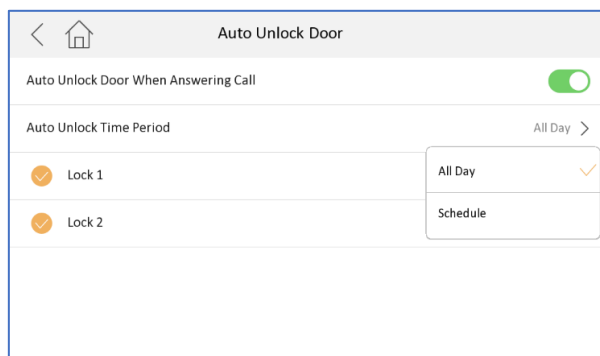
7. Support blocklist function, after enable, you can long press the calling record and add this number to blocklist, and manage blocked number from contact page.



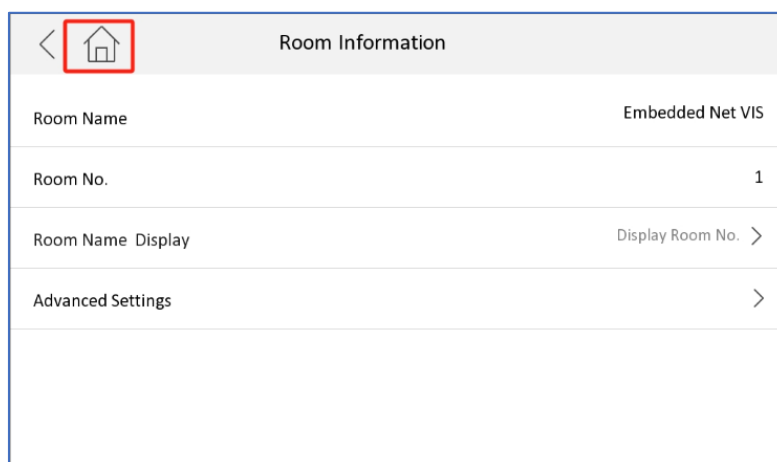
8. Support voice changer, after enable, the changed voice will be heard in the other side (door station).
Note: Limited by device hardware performance, this function is only supported in KH8 series indoor station.



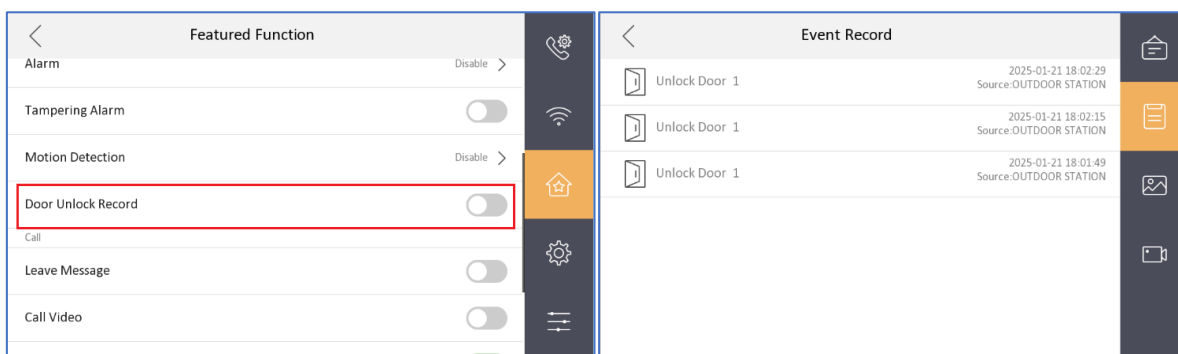
9. Support unlock automatically after receive call and set valid time duration.



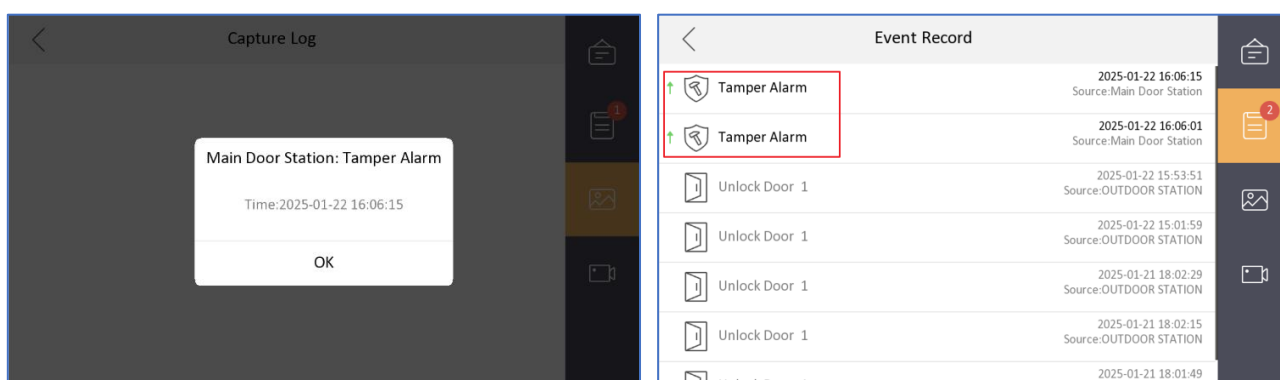
10. In the secondary or tertiary menu, one key is supported to return to the main interface



11. Support checking door station unlock records on indoor station (disabled by default).

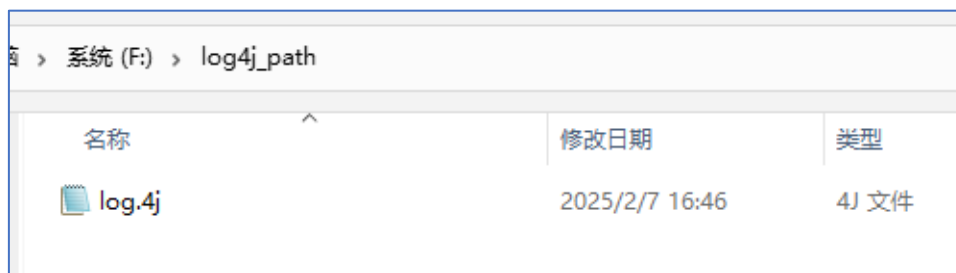


12. Support receiving the tamper alarm of door station



13. Support saving device debug logs into TF card, after enable the device will create a folder named “log4j_path” and device logs will be saved automatically in TF card.



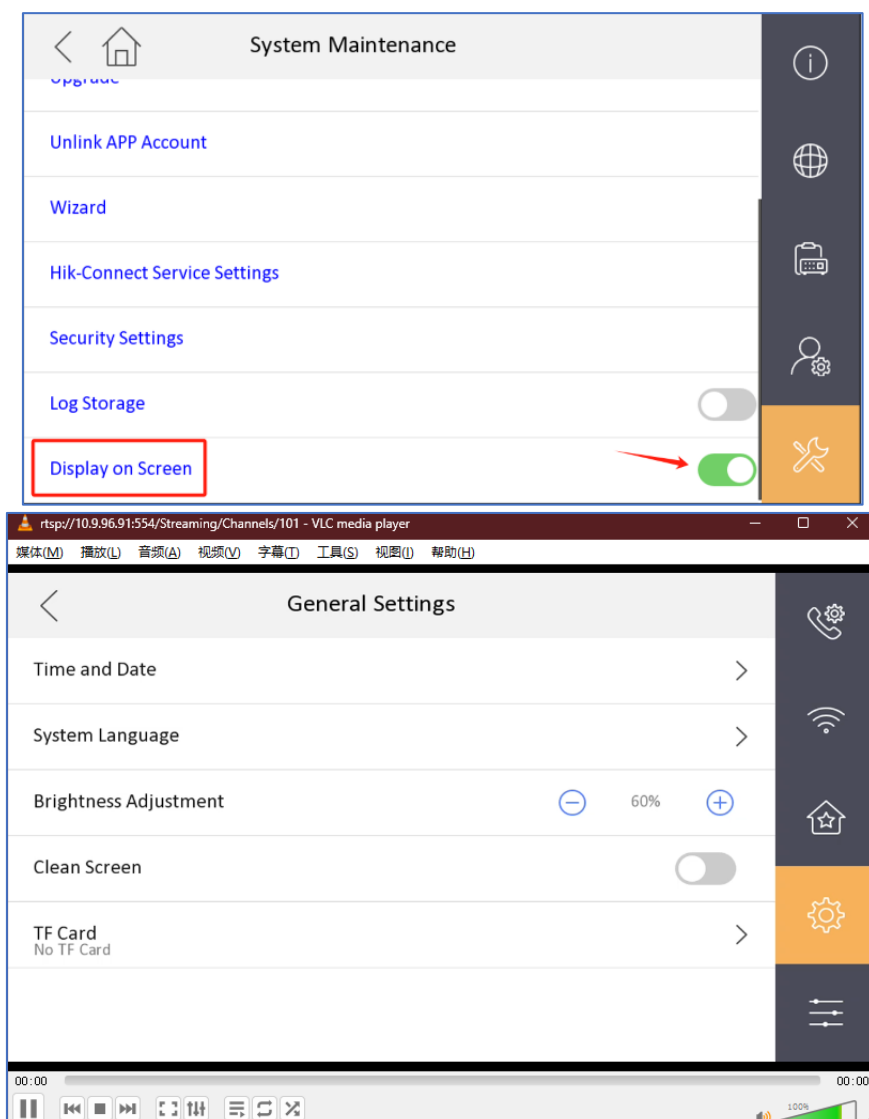


14. Support display on screen function. After enable, you can live view real time indoor station screen with VLC media player through RTSP protocol. For example

<rtsp://admin:password@IP Address:554/Streaming/Channels/101>

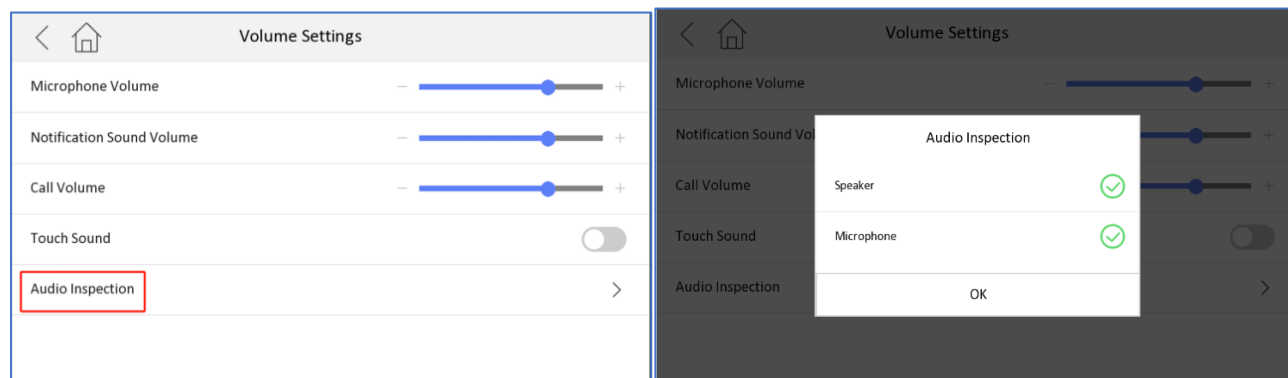
Note: a. The function will occupy high performance of device, we recommend to use only for training or capturing the screenshot for making marketing / how-to documents.

b. The door station video stream is encrypted in sdk protocol, we can't see it in the VLC player in this way.

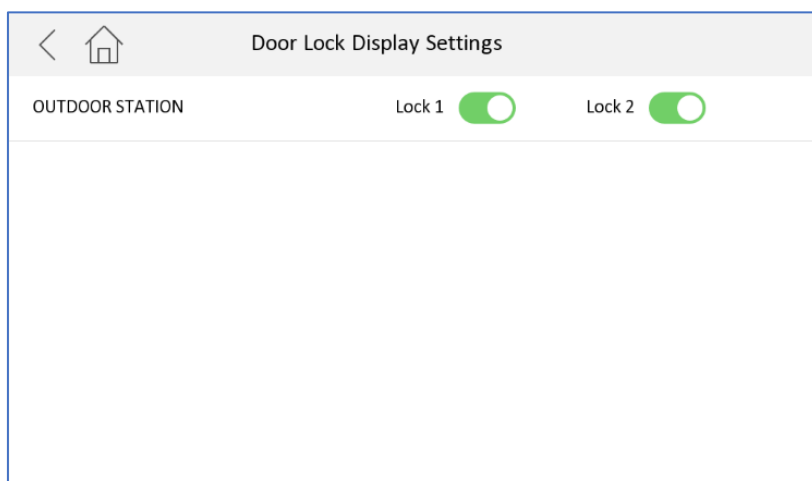


15. Support audio inspection function, customer can check whether microphone and speaker hardware are good or not by themselves.

Note: DS-KH8350 doesn't support this function because of hardware limitation.



16. Support live view the camera image (if it's supported by the 3rd party device) before answer the VOIP call. (In previous version, we can only see the image after answer/pick up the call)
17. Support lock icon display configuration for each door station



Modified Features

1. The menu for voice messages has been moved to the Call Log page
2. Optimized the compatibility for standard SIP server
3. Optimized the issue that the background of the main interface of some models is white and the font size is too small

Indoor Station Firmware Release Note (2024-11-15)

Device Model	DS-KH8350-WTE1, DS-KH8350-TE1, DS-KH6320-WTE1, DS-KH6320-TE1, DS-KH6320Y-WTE2, DS-KH6320EY-WTE2, DS-KH8520-WTE1, DS-KH6320-WTDE1, DS-KH6320-TDE1
Firmware Version	V2.2.96_build241111

Modified Features

1. The internal interaction logic between the device and the Hik-Connect server has been optimized.

Indoor Station Firmware Release Note (2024-11-01)

Device Model	DS-KH8350-WTE1, DS-KH8350-TE1, DS-KH6320-WTE1, DS-KH6320-TE1, DS-KH6320Y-WTE2, DS-KH6320EY-WTE2, DS-KH8520-WTE1, DS-KH6320-WTDE1, DS-KH6320-TDE1
Firmware Version	V2.2.96_build241028

Modified Features

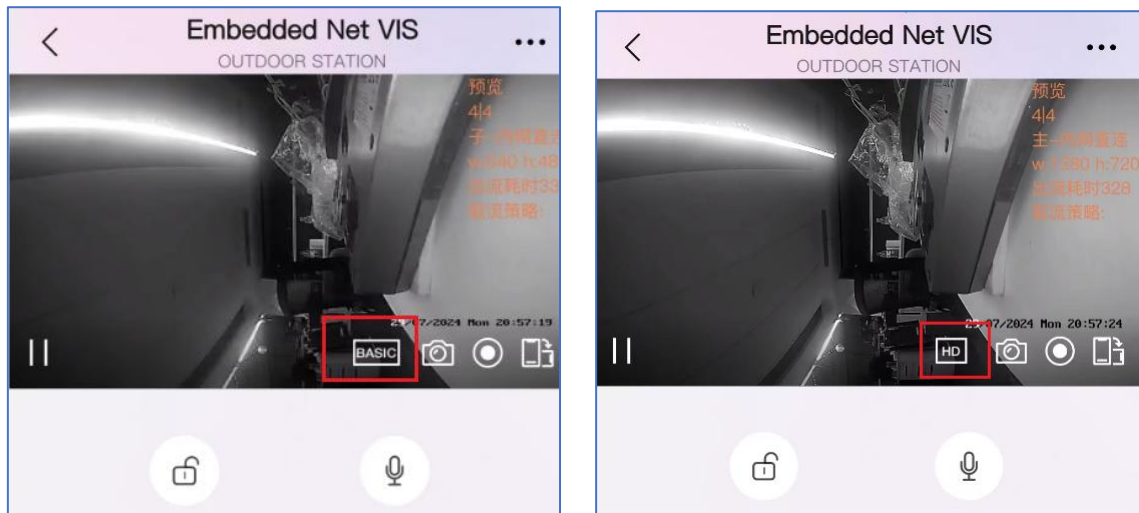
1. Adjust the audio gain adjustment and optimized the anti-echo effect

Indoor Station Firmware V2.2.92_build241008 Release Note (2024-10-25)

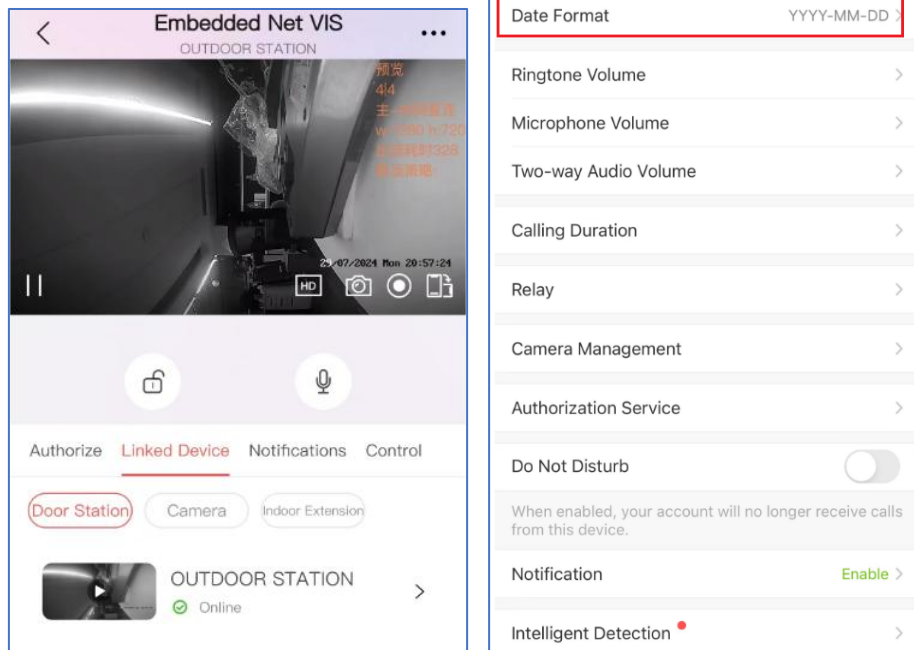
Device Model	DS-KH8350-WTE1, DS-KH8350-TE1, DS-KH6320-WTE1, DS-KH6320-TE1, DS-KH6320Y-WTE2, DS-KH6320EY-WTE2, DS-KH8520-WTE1, DS-KH6320-WTDE1, DS-KH6320-TDE1
Firmware Version	V2.2.92_build241008

New Features

1. Optimize the audio quality with NetEQ algorithm and add 16KHz sampling rate (only support 8KHz before), supports more audio formats (auto-negotiation), including G.711u, G.711a, G.722.1
2. Support switching between main and sub stream (HD and Basic) when live view the door station from hik-connect app

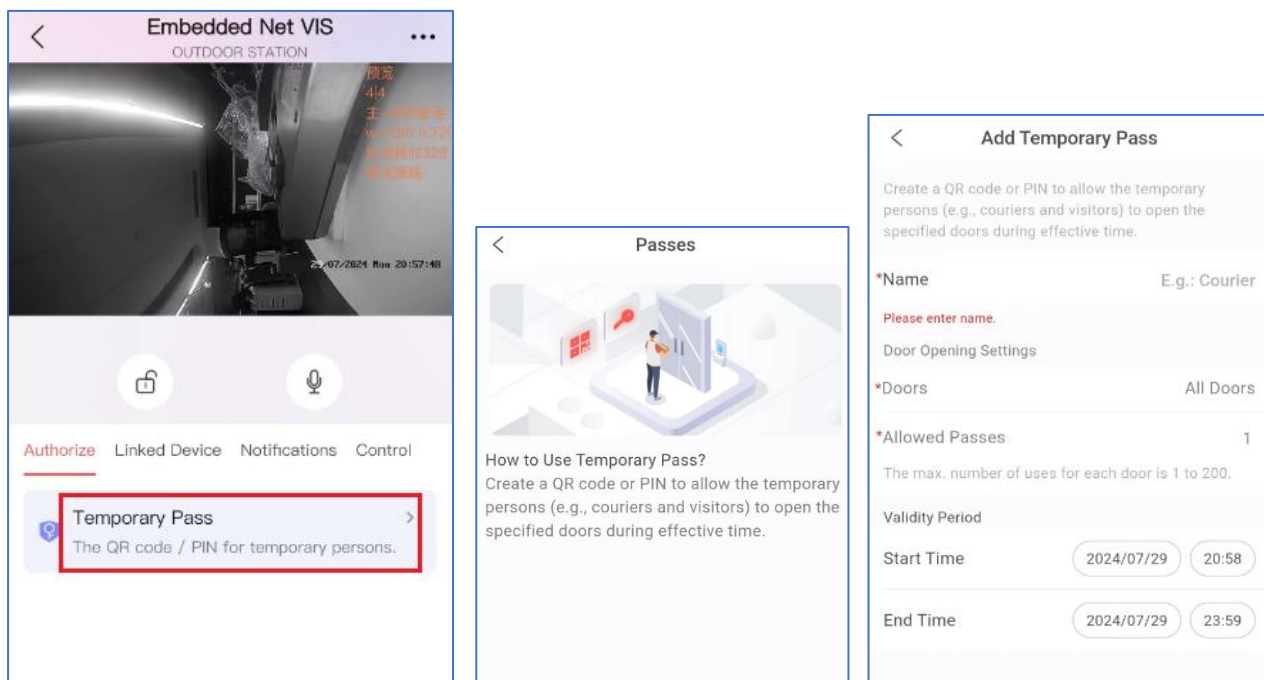


3. Synchronize the door station and camera name and display on the Hik-Connect app.
4. Support display doorphone, camera and indoor extension list, support time zone and date format setting from Hik-Connect app

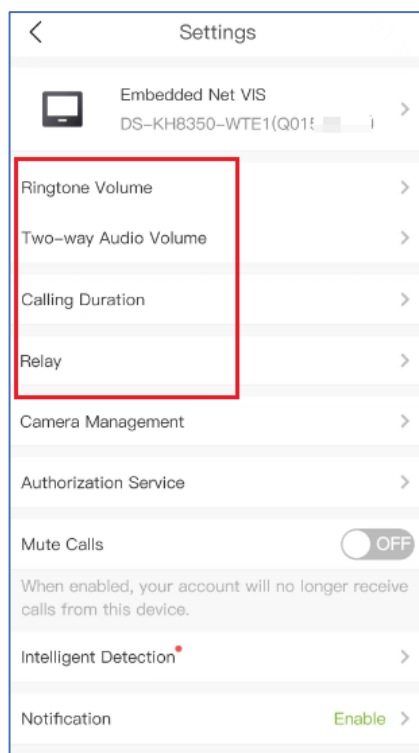


- Support adding temporary visitor QR and PIN on Hik-Connect and apply to the door station.

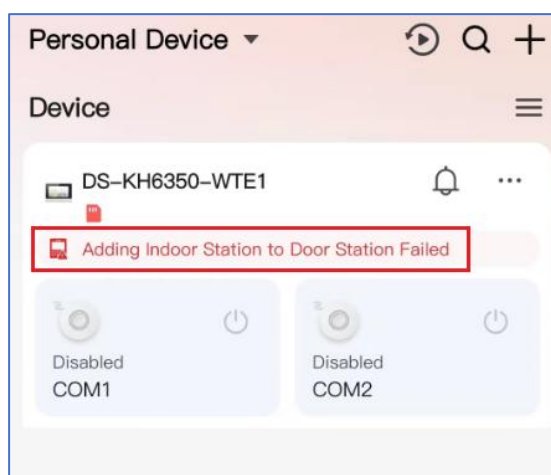
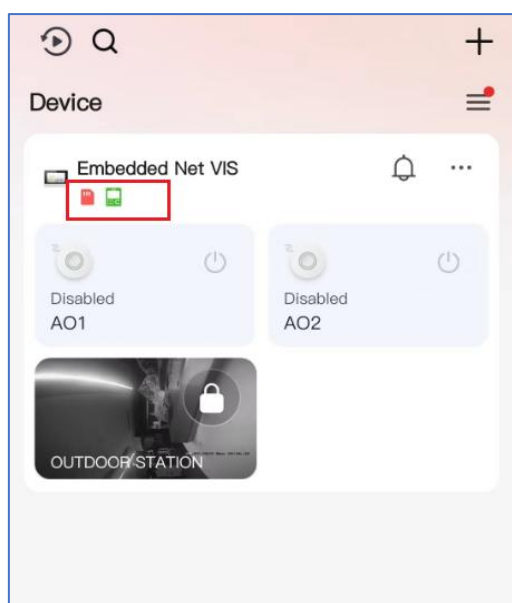
Note: This function should be supported by the door station at the same time.



- Configure the ringtone/intercom audio volume, call duration and TF card parameters from Hik-Connect



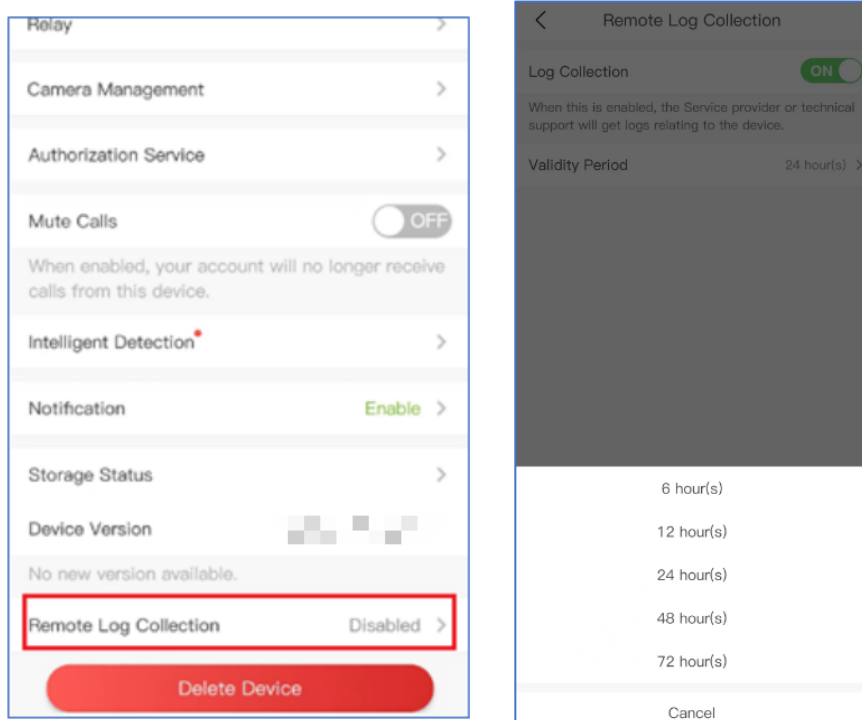
- Show status on Hik-Connect main interface (including alarm output relay, door station registration, TF card and Wi-Fi status)



- Support collecting the device log from Hik-Connect cloud after the end user enable the

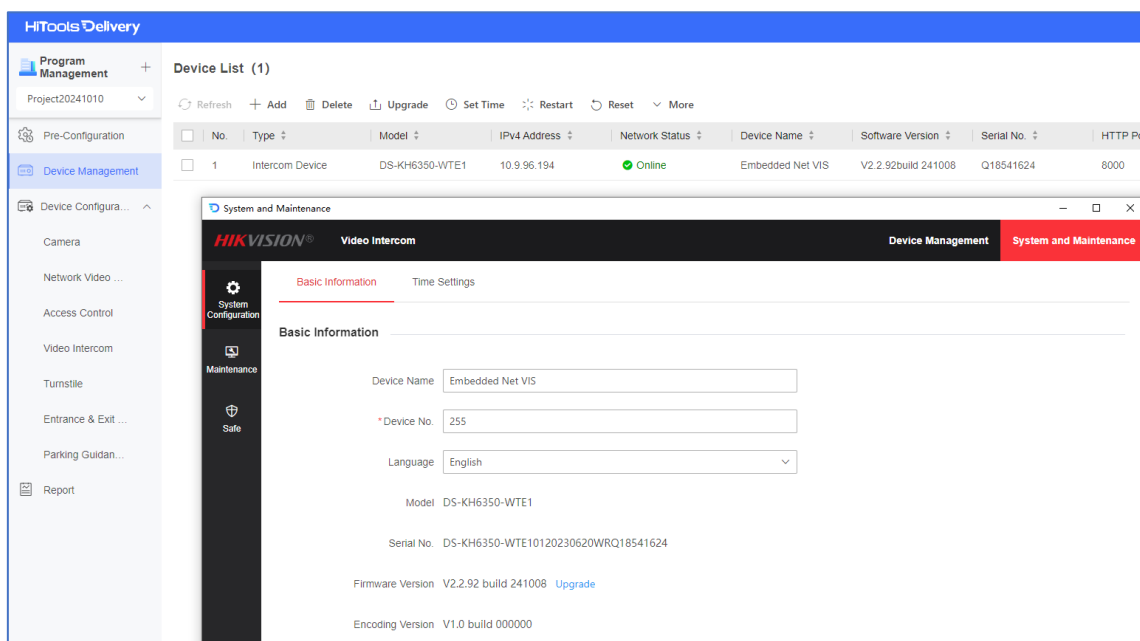
authorization service from App, within the valid duration, technical support can collect the device log.

Note: Please send the issue video and device SN to technical support for better issue understanding.



9. Compatible with HiTools Delivery, and open remote configuration menu to make some settings.

Download link: <https://www.hikvision.com/en/support/tools/hitools/cl7f0143d2c781a3e3/>



Modified Features

1. Optimize some local UI display issues
2. Optimize the some error prompts after wrong password input.

Indoor Station Firmware V2.2.24_build240115

Release Note (2024-01-31)

Device Model	DS-KH8350-WTE1, DS-KH8350-TE1, DS-KH6320-WTE1, DS-KH6320-TE1, DS-KH6320Y-WTE2, DS-KH6320EY-WTE2, DS-KH6320-WTE2(B), DS-KH8520-WTE1, DS-KH6320-WTDE1, DS-KH6320-TDE1
Firmware Version	V2.2.24_build240115

Reason of Upgrade

Fix bugs, enhance products quality and meet customers' requirements.

Modified Features

1. Optimize translation of DND(Do Not Disturb) function in local GUI, change from indoor extension to indoor station.
2. Remove the prompt including "Hik-Connect" in NEU fw.
3. Add Call Center icon in the dial page
4. Fixed: When using some brand standard SIP servers, there is no video when the door station calls the indoor station through standard SIP
5. Fixed the issue that there is a small probability that the wifi hotspot cannot be scanned
6. Fixed the issue that when the outer door station called the indoor station, there was no lock button or there was a lock button but the unlocking failed in hik-connect app.
7. Optimized the logic of associating the wizard with activated door station
8. Modify the ringback tone file of the indoor station

Indoor Station Firmware V2.2.20_build230601

Release Note (2023-06-06)

Device Model	DS-KH8350-WTE1, DS-KH8350-TE1, DS-KH6320-WTE1, DS-KH6320-TE1, DS-KH6320Y-WTE2, DS-KH6320EY-WTE2, DS-KH6320-WTE2(B), DS-KH8520-WTE1, DS-KH6320-WTDE1, DS-KH6320-TDE1
Firmware Version	V2.2.20_build230601
iVMS-4200	V3.9.1.4 or later

Reason of Upgrade

Add new feature, fix bugs, enhance products quality and meet customers' requirements.

New Features

- support 35 languages

English	Deutsch	Nederland	繁體中文	Tiếng Việt	Português
Русский	Italiano	Português (Brasil)	Eesti	Hrvatski	Lietuvių
български	Česky	Español	Dansk	Slovenščina	Latviešu
Magyar	Slovenčina	עברית	Svenska	Srpski	МОНГОЛ
Ελληνικά	Français	România	Norsk	العربية	O'zbekcha
	Polski	Türkçe	Suomi	Україна	Қазақша

- support self-defined indoor station name on the screen, there are 3 option, display room No., Room name or do not display, by default it's room No.

<

Room Information

Room Name

Living Room

Room No.

1

Room Name Display

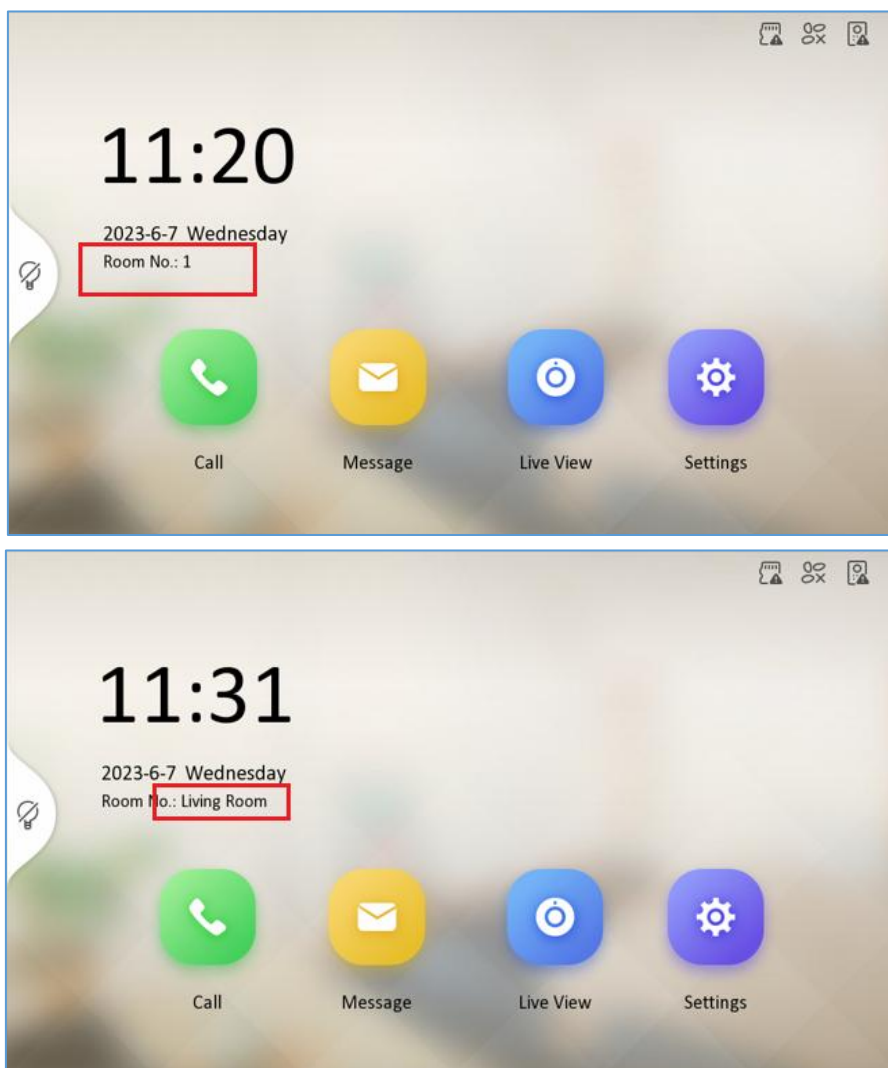
Display Room No. >

Advanced Settings

Display Room No. ✓

Display Room Name

Do Not Display



3. support 16 indoor extension (was 5 in previous version)
4. support modify main door station name from hik-connect (sub door station name can be changed from hik-connect local, but it will not be applied to device, this function will be supported in the future)

Modified Features

1. Optimize the IP allocation logic in the wizard, when the indoor station choose to use the default IP 192.0.0.64, it will be conflict with other indoor station, so it will automatically modify the IP address to 192.0.0.X which is not conflict with other devices
2. Move floor number parameter to advanced settings menu

Indoor Station Firmware V2.2.12_build230408

Release Note (2023-04-18)

Device Model	DS-KH8350-WTE1, DS-KH8350-TE1, DS-KH6320-WTE1, DS-KH6320Y-WTE2, DS-KH6320-WTE2(B), DS-KH6320-TE1, DS-KH8520-WTE1
Firmware Version	V2.2.12_build230408
iVMS-4200	V3.9.1.4 or later

Reason of Upgrade

Fix bugs, enhance products quality and meet customers' requirements.

Modified Features

1. Optimize the IP assignment logic of the associated door station and indoor extensions within the wizard.
2. Optimized the function of setting door station parameters from the indoor station
3. Fix the problem that the device hangs after switching to Greek

Indoor Station Firmware V2.2.8_build230219

Release Note (2023-03-02)

Device Model	DS-KH8350-WTE1, DS-KH8350-TE1, DS-KH6320-WTE1, DS-KH6320Y-WTE2, DS-KH6320-WTE2(B), DS-KH6320-TE1, DS-KH8520-WTE1
Firmware Version	V2.2.8_build230219
iVMS-4200	V3.8.3.1 or later

Reason of Upgrade

Fix bugs, enhance products quality and meet customers' requirements.

Modified Features

3. Fix the occasional connection failure between indoor station and indoor extension
4. Enhance the stability of Wi-Fi connection
5. Fix the audio issue between indoor extension and outer door station
6. Fixed the problem that when the indoor station and the door station are registered to Asterisk standard SIP server, there is no unlock icon when the door station calls the indoor station

7. Increase the indoor station intercom voice volume.

Indoor Station Firmware V2.2.2_build221223

Release Note (2022-12-30)

Device Model	DS-KH8350-WTE1, DS-KH8350-TE1, DS-KH6320-WTE1, DS-KH6320Y-WTE2, DS-KH6320-WTE2(B), DS-KH6320-TE1, DS-KH8520-WTE1
Firmware Version	V2.2.2_build221223
iVMS-4200	V3.8.3.1 or later

Recommended Firmware

It is recommended to use the following devices and version together, because they can cooperate and work normally after the docking test.

Device type	Test model	Version
Door station	KD8003	Protocol 1.0: V2.0.8_build200701
	KD8003(B)	Protocol 2.0: V2.2.58_build220725
	KV6113(B)/KV8X13(B)	V2.2.53_build220816
	KV6113(C)	V2.2.55_build220816
Indoor Station	DS-KH6320-LE1	V1.4.62_build220414
Main Station	KM9503	V1.0.36_build220619

Reason of Upgrade

Fix bugs, enhance products quality and meet customers' requirements.

Modified Features

8. Fixed the problem of not being able to slide the screen after resting the screen in the door station configuration page of the wizard
9. Fix the occasional defect: after the indoor station activation and configuration is completed, it prompts and display two identical indoor extensions.

Indoor Station Firmware V2.2.2_build221129

Release Note (2022-12-02)

Device Model	DS-KH8350-WTE1, DS-KH8350-TE1, DS-KH6320-WTE1, DS-KH6320Y-WTE2, DS-KH6320-WTE2(B), DS-KH6320-TE1, DS-KH8520-WTE1
Firmware Version	V2.2.2_build221129
iVMS-4200	V3.8.3.1 or later

Recommended Firmware

It is recommended to use the following devices and version together, because they can cooperate and work normally after the docking test.

Device type	Test model	Version
Door station	KD8003	Protocol 1.0: V2.0.8_build200701
	KD8003(B)	Protocol 2.0: V2.2.58_build220725
	KV6113(B)/KV8X13(B)	V2.2.53_build220816
	KV6113(C)	V2.2.55_build220816
Indoor Station	DS-KH6320-LE1	V1.4.62_build220414
Main Station	KM9503	V1.0.36_build220619

Notes:

1. This version firmware is compatible with both protocol 1.0 and 2.0 door station firmware

Devices of Door Station	Firmware	Protocol Type
First Generation	All versions	Protocol 1.0
KD8003	V2.0.X	Protocol 1.0
	V2.2.3 and above	Protocol 2.0
KV(B) Series	V2.1.X	Protocol 1.0
	V2.2.3 and above	Protocol 2.0
KB8113	V2.2.1	Protocol 1.0
	V2.2.10 and above	Protocol 2.0
KD9203/KD3003/KD8103/KD8023	All versions	Protocol 2.0

2. Test records only contain the cases for normally devices and do not represent all the scenarios and all the functions.

Reason of Upgrade

Add new feature, fix bugs, enhance products quality and meet customers' requirements.

New Features

10. The wizard is fully optimized, including:

A. Quick setting for registration password

After checked, the registration password of indoor station will be consistent with its activation password, no need to input manually.

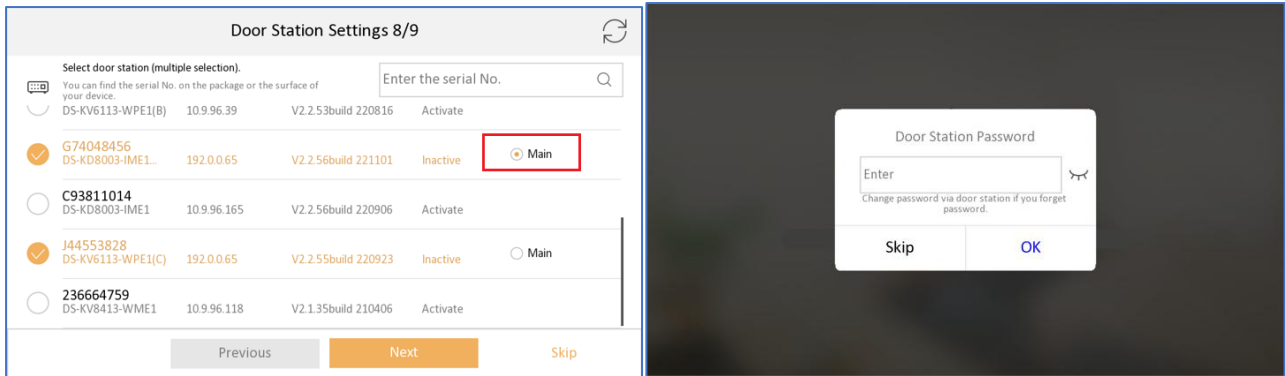
***Note:** Registration password is used to register between devices, if different, it will cause calling failed. All devices in same intercom system must use same registration password.*

Indoor Station Settings 4/9	
Device Type	Indoor Station >
Floor No	1
Room No	1
Advanced	>
<div><div>! Registration Password</div><div><input type="checkbox"/> Same as the admin password.</div></div>	Not configured >
<div>Previous Next Skip</div>	

B. Link indoor station with main and sub door station

Note:

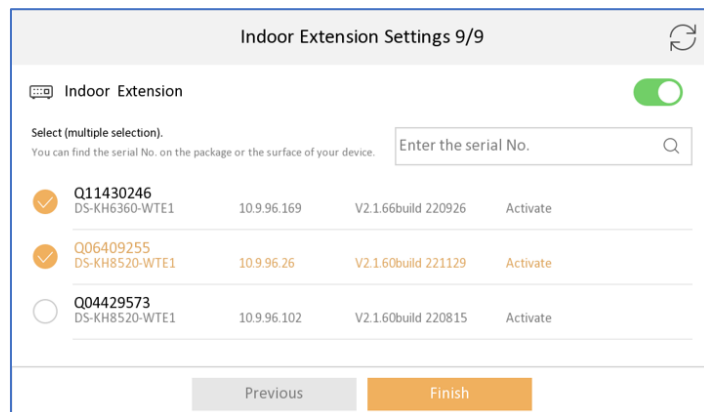
- the first selected will be the main door station by default, the second will be sub1, 3rd will be sub2, etc. You can also cancel and select the main door station manually.*
- Maximum select 17 door stations at one time (1 main and 16 sub door stations)*
- If the selected devices are not activated, indoor station will activate them with same activation and registration password, then set the IP address for them in same network segment automatically.*
- If the door station is already activated with different password, it will prompt you to input door station password*
- If the main and sub door station are activated with different activation password, the registration will be failed (sub door station can't call indoor station).*



C. Link indoor station with indoor extension

Note:

- The selected indoor station will be and numbered as indoor extension 1,2,3...
- Maximum select 5 indoor extensions at one time
- If the selected devices are not activated, indoor station will activate them with same activation and registration password, then set the IP address for them in same network segment automatically.
- If the selected devices are activated with different password, the registration will be failed (door station can't call indoor extension).



D. Pairing with main door station, sub door station and indoor extension

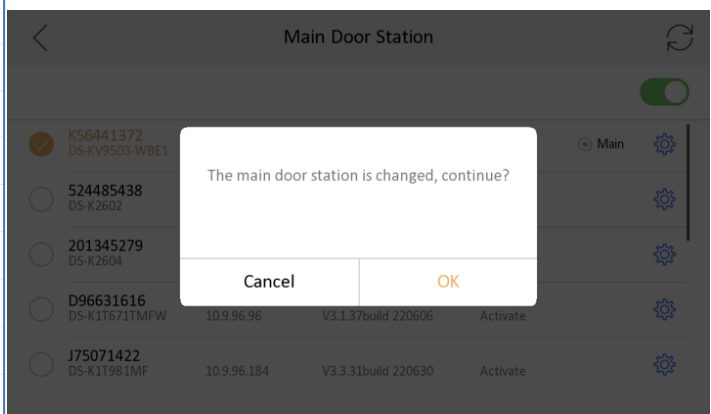
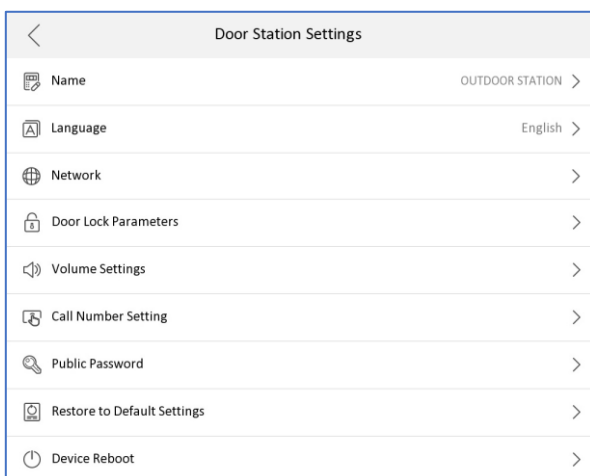
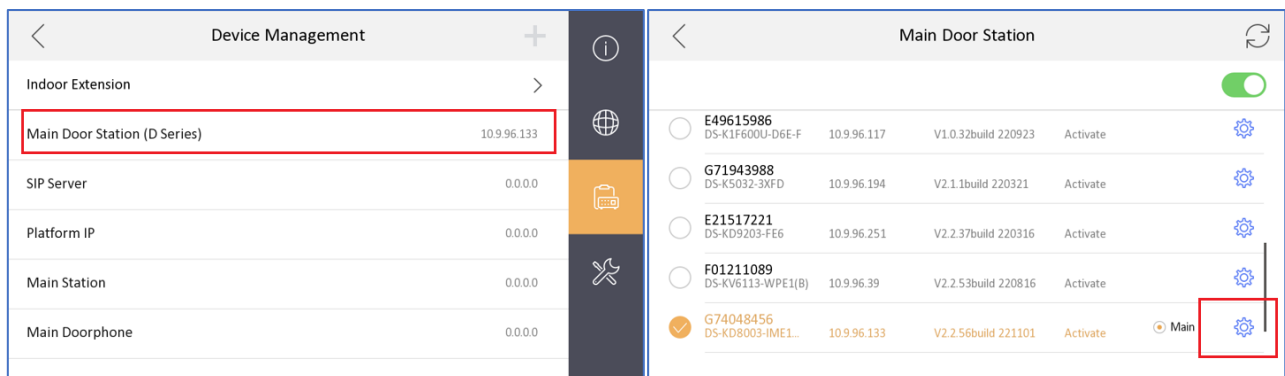
Note: The pairing time duration depends on the device quantity you selected in previous steps, it will take about up to 5 mins, please wait patiently until the process finish and show "Configured" as below.



11. Set the important parameters of door station from indoor station Menu-Advanced settings-Configuration-Device Management-Main Door Station (*not from the wizard*).

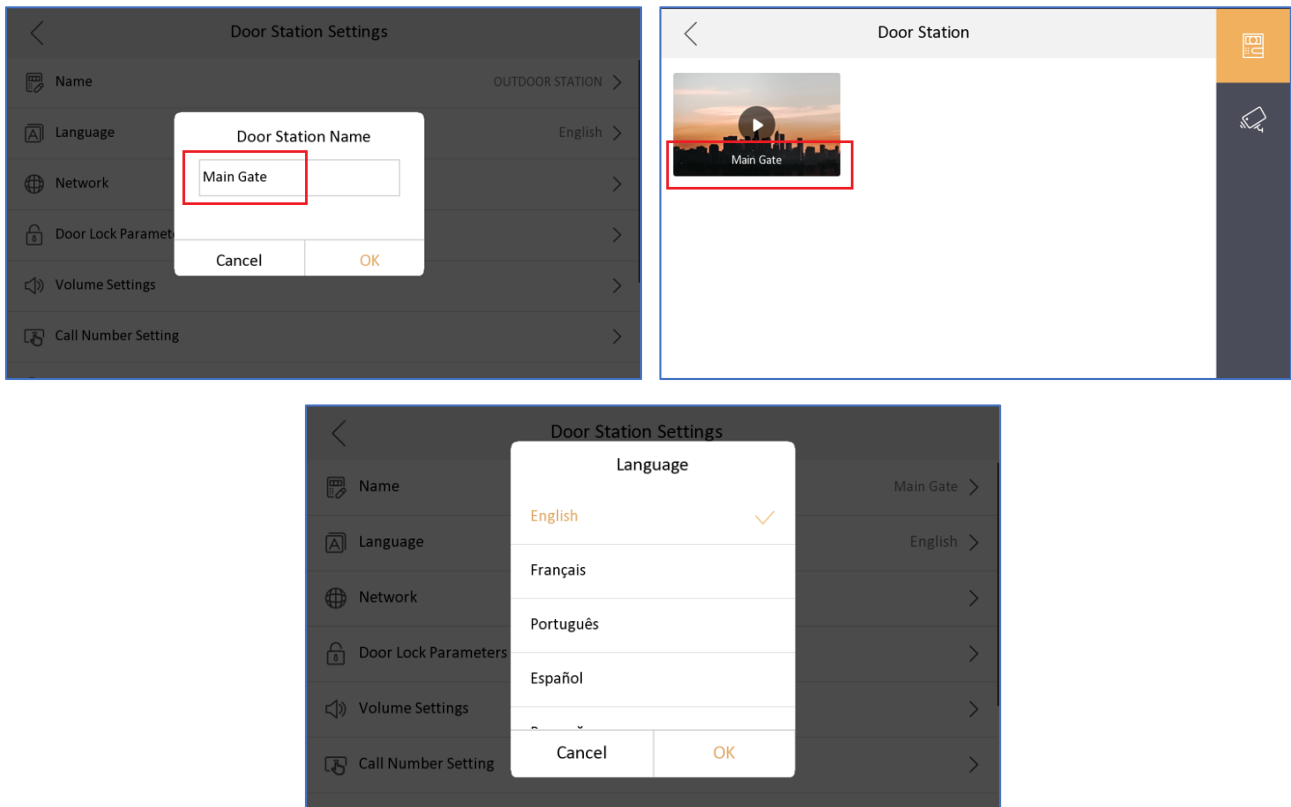
Note:

- You can change parameters of all door station (no matter it's linked or not) in the list by click the setting icon, see pic 2.
- You can also change linked main door station from this list by click device from the list, if you want to change linked sub door station, please go to Advanced settings-Configuration-System maintenance-Wizard, and link device again.
- After change the linked main door station, device will prompt "The main door station is changed, continue?", see pic4 as below

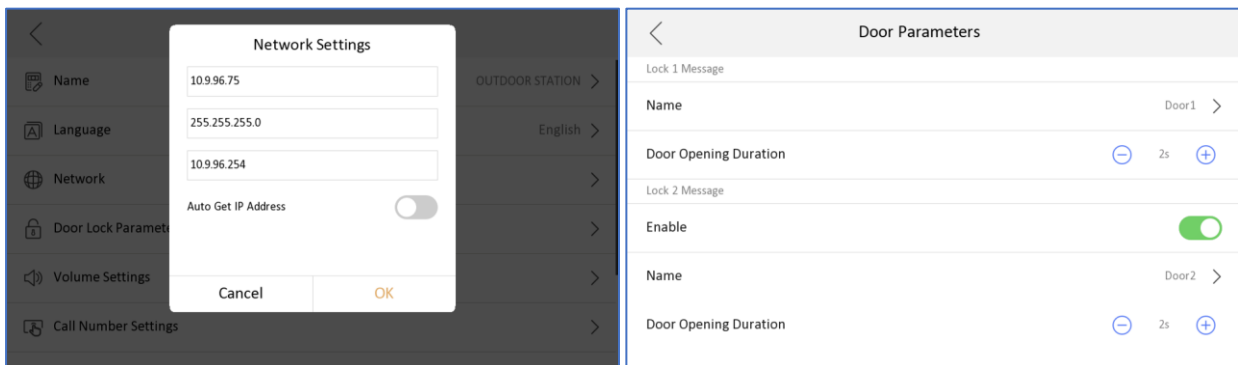


The parameters we can configured from indoor station including:

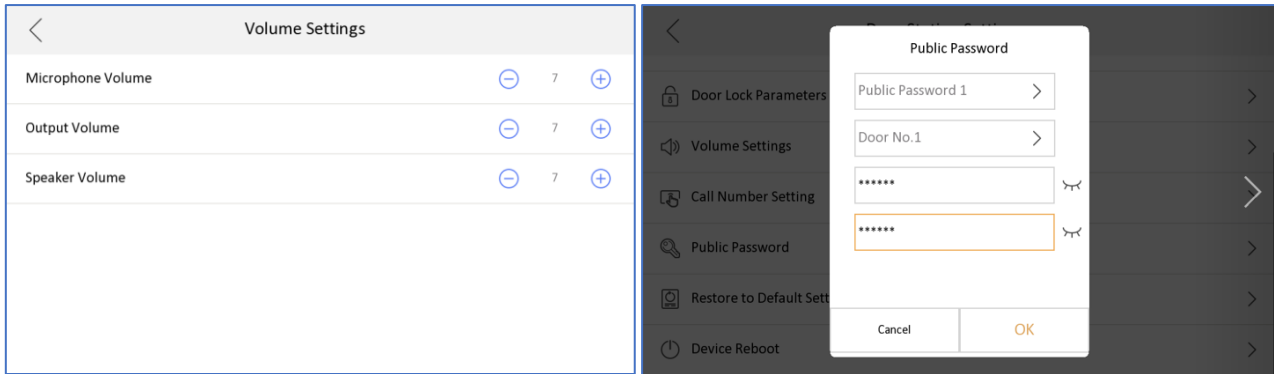
A. Set door station name (will be displayed in live view page), set door station language.



B. Set door station IP address, subnet mask, gateway, enable DHCP, lock name, door open duration, enable lock2, etc.

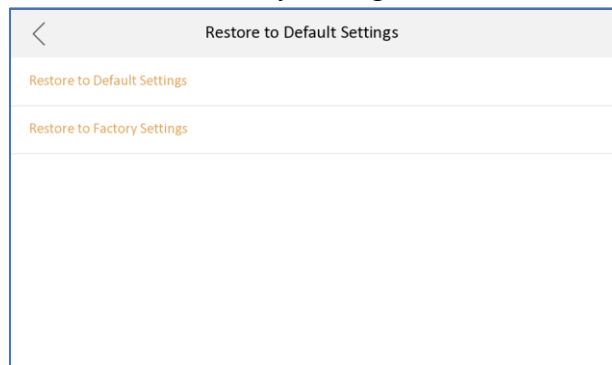


C. Door station volume setting, physical button call number, public password (lock1 or lock2)




Call Number Setting		
Call Room No. 0	Main module button	1 >
Call Room No. 1		2 >
Call Room No. 2		3 >
Call Room No. 3	Nametag KK module button	4 >
Call Room No. 4		5 >
Call Room No. 5		6 >
Call Room No. 6		7 >

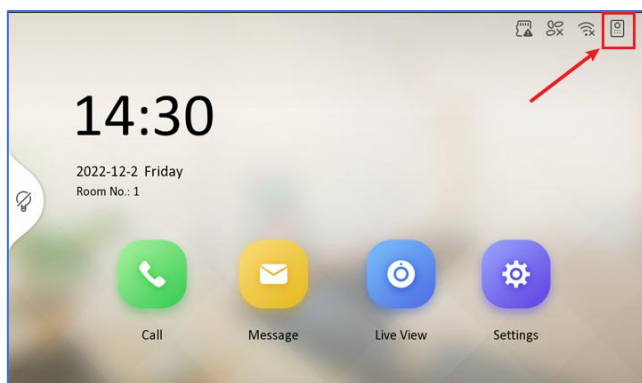
D. Restore door station to default or factory settings.



Modified Features

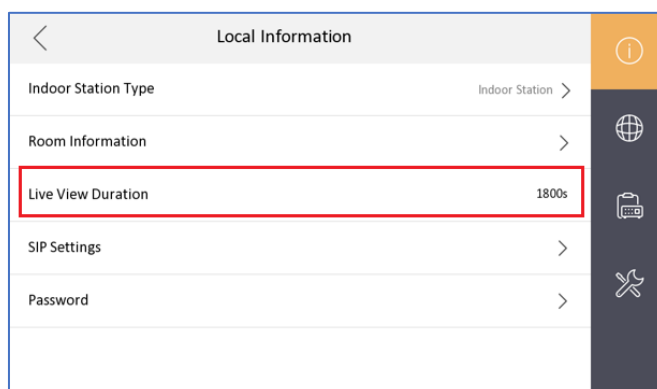
1. Optimized the icon of door station registration status in the main UI up right corner.

Note: If the door station call indoor station failed, you can click this icon  to register to door station manually, if register failed, it will indicate the reason for the failure.



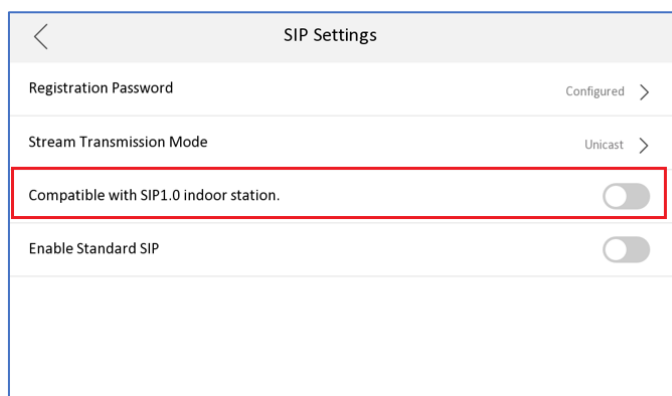
	Before	Now
Indoor station registers to door station success		
Indoor station registers to door station failed		
Indoor station registers to door station and KM9503 success		

- Door station and IP camera live view duration increase to 1,800s, range 10-1,800s, 30s by default.



- Support switching between protocol 1.0 and 2.0, by default it's protocol 2.0
After enable, the indoor station is compatible with protocol 1.0 indoor extension and not compatible with protocol 2.0 indoor extension.

Note: After enable, all indoor extension of this indoor station must be protocol 1.0 firmware, don't mix protocol 1.0 and 2.0 indoor extension under same indoor station, or it will result to calling failed.



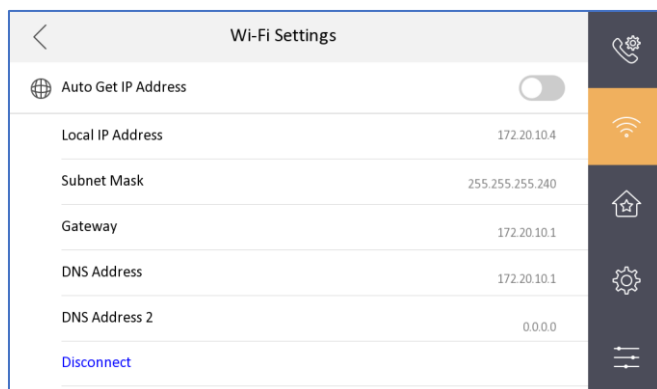
-----Finish-----Indoor Station Firmware V2.2.2_build221129 Release Note

2nd Gen Indoor Station Firmware V2.1.52_build220720 Release Note (2022-07-20)

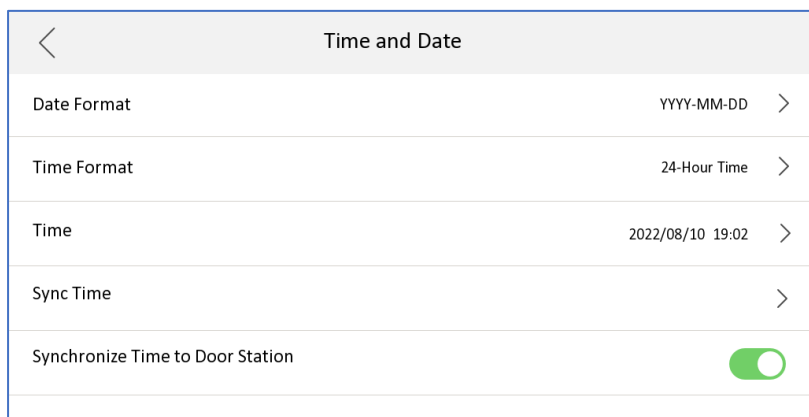
Device Model	DS-KH8350-WTE1、DS-KH8350-TE1、DS-KH6320-WTE1、DS-KH6320-WTE2、DS-KH6320-WTE2(B)、DS-KH6320-TE1、DS-KH8520-WTE1
Firmware Version	V2.1.52_build220720
iVMS-4200 Version	Latest version
Hik-Connect APP	Latest version

Add

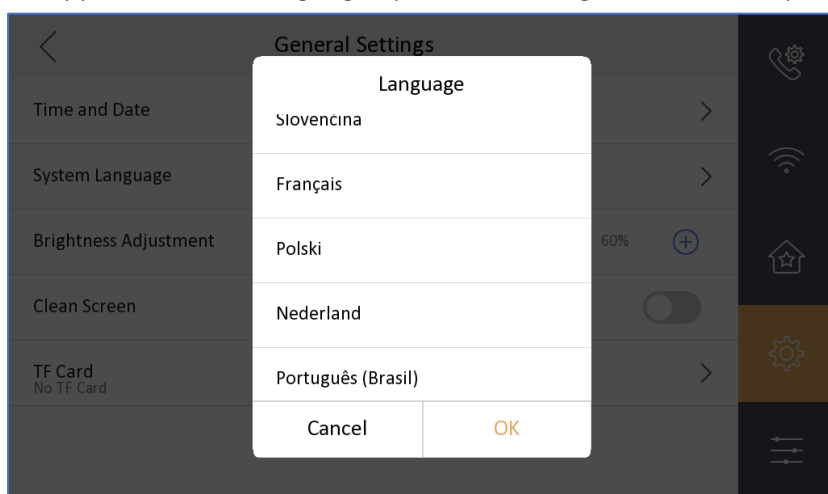
1. Supports static IP address configuration of Wi-Fi (DHCP, IP address, subnet mask, gateway, DNS1, DNS2).



2. Supports configuring time and time zone for the door station.

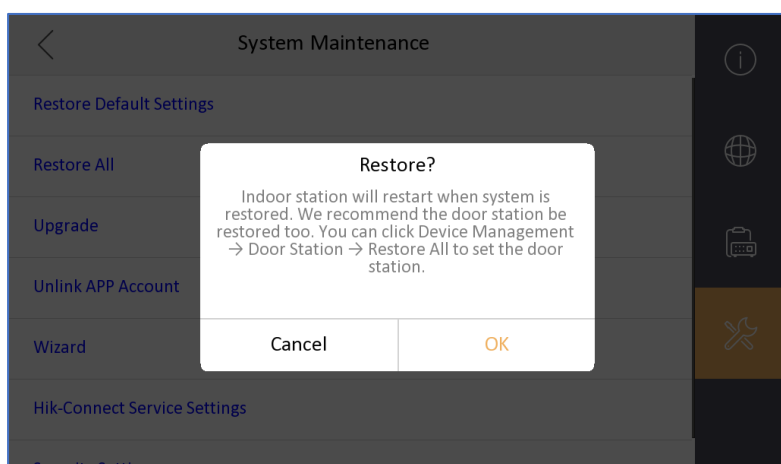


3. Supports C-S registration mode of indoor station and master station.
4. Supports two new languages (standard Portuguese and Slovak).

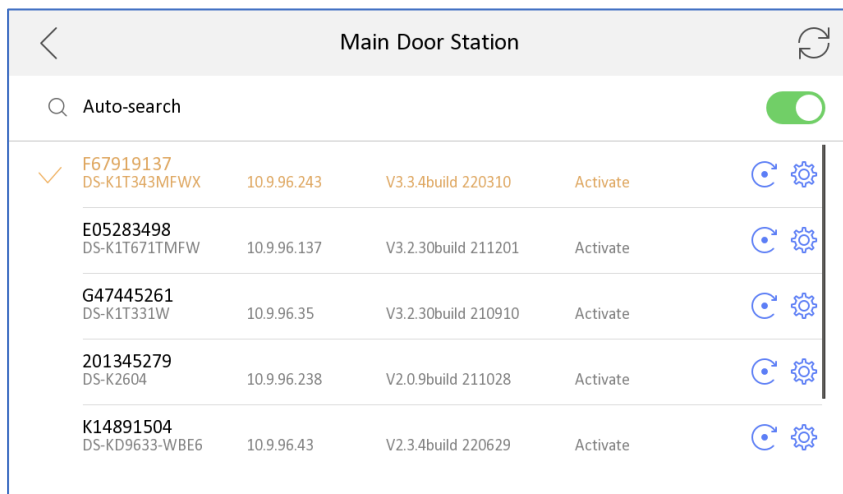


Fix

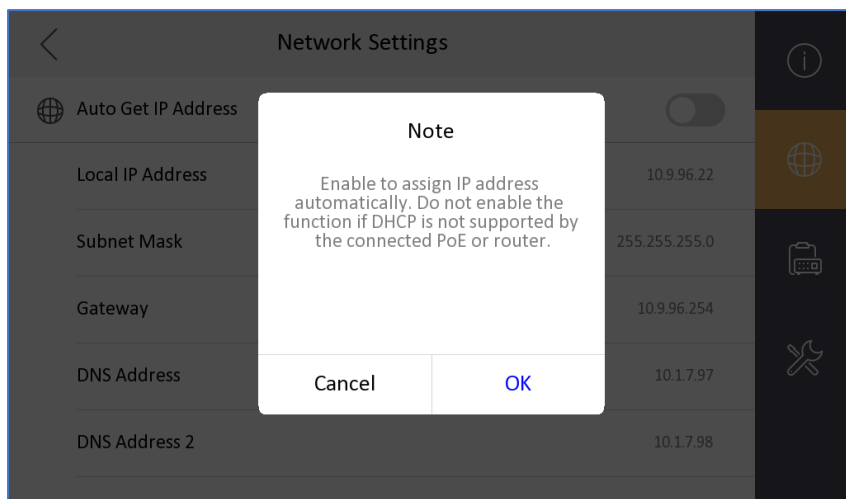
1. Optimizes the maintenance interface with a pop-up window when clicking **Restore** or **Restore All**.



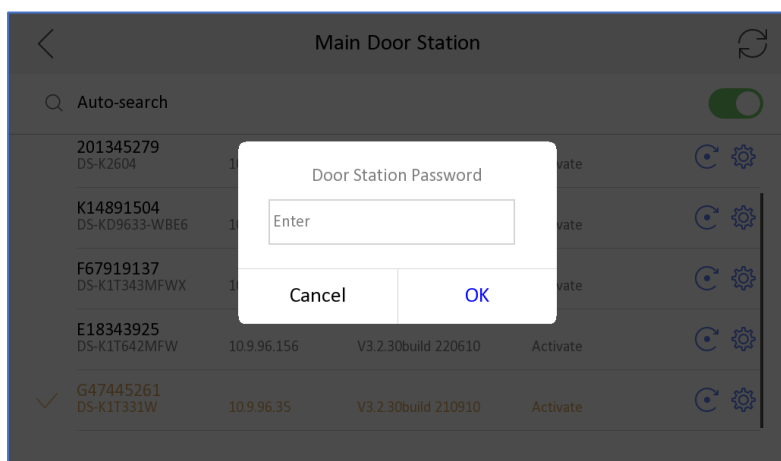
2. Adds the effect of selected door station when relating devices in wizard.



3. Adds a prompt when assigning network IP address automatically.



4. In configure wizard to related door station, when the door station password is different from the indoor station, prompt information will pop.



2nd Gen Indoor Station Firmware

V2.1.46_build220607 Release Note

(2022-06-20)

Device Model	DS-KH8350-WTE1、DS-KH8350-TE1、DS-KH6320-WTE1、DS-KH6320-WTE2、DS-KH6320-WTE2(B)、DS-KH6320-TE1、DS-KH8520-WTE1
Firmware Version	V2.1.40_build220607
iVMS-4200 Version	Latest version
Hik-Connect APP	Latest version

Fix

1. Repair the defects left by system testing;

2. Fix the defect of userid product;
3. Fix the defect that the abnormal processing of the database encryption and decryption interface will cause the interface to jam;
4. Repair the call defect of incompatible third-party door-to-door machine;

2nd Gen Indoor Station Firmware

V2.1.40_build220428 Release Note

(2022-05-13)

Device Model	DS-KH8350-WTE1、DS-KH8350-TE1、DS-KH6320-WTE1、DS-KH6320-WTE2、DS-KH6320-WTE2(B)、DS-KH6320-TE1、DS-KH8520-WTE1
Firmware Version	V2.1.40_build220512
iVMS-4200 Version	Latest version
Hik-Connect APP	Latest version

Fix

1. Optimize registration password settings in Wizard.

Wizard-Indoor Station Settings 3/5

Device Type

Indoor Station >

Floor No. 1

Room No. 1

The password might be required when linking indoor stations to door stations or main stations.



Registration Password

Not configured. >

☐ Be consistent with the activation password.

Indoor Extension Settings



Previous

Next

Skip

Wizard-Indoor Station Settings 3/5

Device Type

Indoor Station >

Floor No. 1

Room No. 1



Registration Password

Not configured. >

☒ Be consistent with the activation password.

When enabled, the people who has the registration password will have the device admin permissions.

Indoor Extension Settings




Previous


Next

Skip


2. Optimize Hik-Connect password configuration page.


Wizard-Hik-Connect Service Settings 4/5

 **Enable Hik-Connect Service** ☐

Verification Code **Enter** 

Hik-Connect Server Status **Disconnected**



Scan to Download Hik-Connect


Scan to Add to Hik-Connect

Previous **Next** **Skip**

3. Support stream transmission mode settings, you can select Unit Broadcast or Group Broadcast.

 **SIP Settings**

 **Registration Password** **Configured** 

stream transmission mode **Unit Broadcast** 

Enable Standard SIP ☐
The password might be required when linking indoor stations to door stations or main stations.

4. Fixed some known bugs.

2nd Gen Indoor Station Firmware

V2.1.34_build211118 Release Note

(2021-11-22)

Device Model	DS-KH8350-WTE1、DS-KH8350-TE1、DS-KH6320-WTE1、DS-KH6320-WTE2、DS-KH6320-WTE2(B)、DS-KH6320-TE1、DS-KH8520-WTE1
Firmware Version	V2.1.34_build211118
iVMS-4200 Version	Latest version
Hik-Connect APP	Latest version

Fix

5. Fixed some bugs.

2nd

Gen Indoor Station Firmware

V2.1.32_build210926 Release Note

(2021-09-30)

Device Model	DS-KH8350-WTE1、DS-KH8350-TE1、DS-KH6320-WTE1、DS-KH6320-WTE2、DS-KH6320-WTE2(B)、DS-KH6320-TE1、DS-KH8520-WTE1
Firmware Version	V2.1.32_build210926
iVMS-4200 Version	Latest version
Hik-Connect APP	Latest version

Fix

1. Solve production line related problems.

2nd Gen Indoor Station Firmware

V2.1.26_210803 Release Note

(2021-08-19)

Device Model	DS-KH8350-WTE1、DS-KH8350-TE1、DS-KH6320-WTE1、DS-KH6320-WTE2、DS-KH6320-WTE2(B)、DS-KH6320-TE1、DS-KH8520-WTE1
Firmware Version	V2.1.26_210803
iVMS-4200 Version	Latest version
Hik-Connect APP	4.13.1 or above

Modify

1. Verification code is empty by default.

Wizard-Hik-Connect Service Settings 4/5

Enable Hik-Connect Service

☒

LBS Server

litedev.hik-connect.com

Verification Code

☒

Previous

Next

Skip

2. Hik-Connect Service Settings is changed to the place of Settings→ Advanced Settings→ Configuration→ System Maintenance.

<
System Maintenance

Restore Default Settings

Restore All

Upgrade

Unlink APP Account

Wizard

Hik-Connect Service Settings

3. Fixed some bugs.

2nd Gen Indoor Station Firmware V2.1.24_210617 Release Note (2021-06-22)

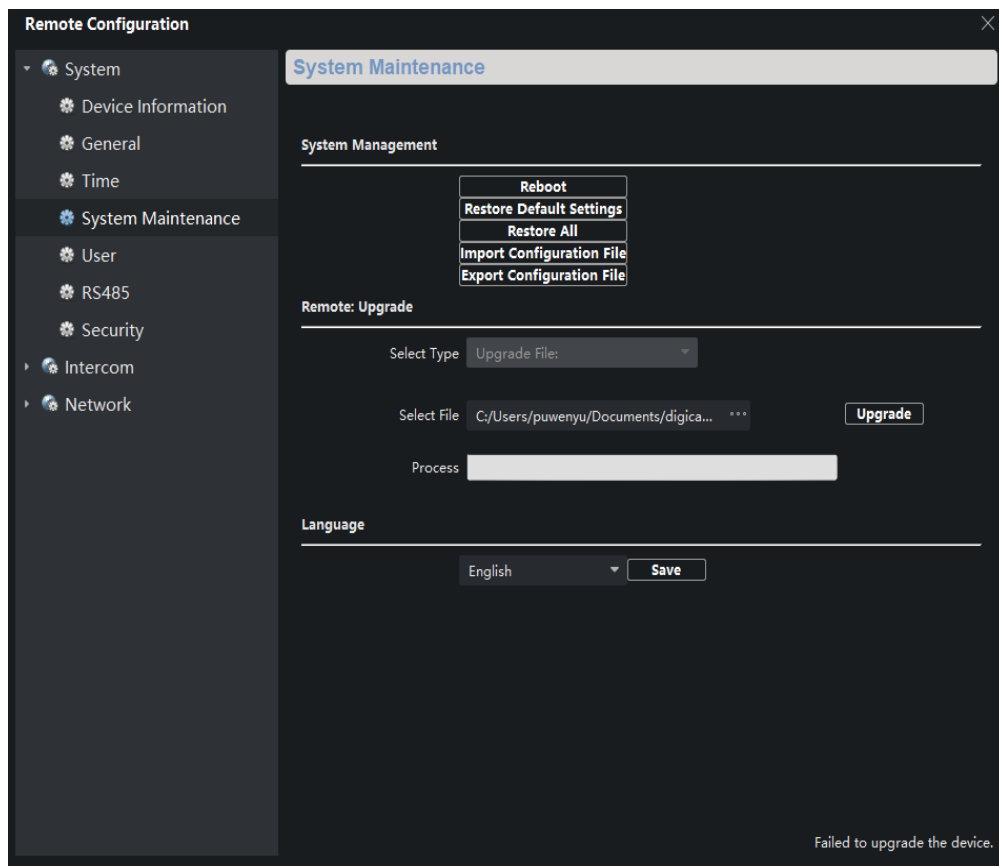
Device Model	DS-KH8350-WTE1、DS-KH8350-TE1、DS-KH6320-WTE1、DS-KH6320-WTE2、DS-KH6320-WTE2(B)、DS-KH6320-TE1、DS-KH8520-WTE1
Firmware Version	V2.1.24_210617
iVMS-4200 Version	Latest version
Hik-Connect APP	4.13.1 or above

Modify

- 1、 Since
V2.1.24
build
210617,
remote

degradation of devices is not supported in all subsequent versions. When degradation occurs, it will prompt Failed to upgrade the device and the device will restart.

Notice: Although the device can be degraded by serial port, the device will fail to start and cannot change the version by using serial port again, which means that the device will be completely unusable.



- 2、Fixed some bugs
- 3、The firmware is compatible with materials which are switched due to supply shortage.

2nd Gen Indoor Station Firmware V2.1.20_210420 Release Note (2021-04-30)

Device Model	DS-KH8350-WTE1、DS-KH8350-TE1、DS-KH6320-WTE1、DS-KH6320-WTE2、DS-KH6320-WTE2(B)、DS-KH6320-TE1、DS-KH8520-WTE1
Firmware Version	V2.1.24_210617
iVMS-4200 Version	Latest version
Hik-Connect APP	4.13.1 or above


NOTE


Registration password will correspond to the serial number to prevent other devices from invading the system

New Function

1. Local interface support to modify the password through email authentication

Create Password

Enter a new password. 

Enter the password again. 

8 to 16 characters are allowed.

☒ Set an email for authentication first.

Enter email address.

OK

Local Information

Indoor Station Type Indoor Station >

Room Information >

Live View Duration 30s +

SIP Settings >

Password >

Email Address >


Email Address

Enter an email address.

Cancel OK

2. Support Hik-Connect configuration, closed by default

Wizard-Hik-Connect Service Settings 4/5

 Enable Hik-Connect Service ☐


LBS Server litedev.hik-connect.com

Verification Code ☐

Previous Next Skip

3. Newly added multi-language Croatian, Dutch, Romanian, Czech, Bulgarian, Croatian, Serbian

4. Add IPC interface, when Open Network Video Intercom protocol is selected, add plaintext ciphertext switch menu item configuration

 **Add Device**

Protocol Settings

Open Network Video Interface >

Device Name

Enter the device name.


IP Address

Enter the IP address.

User Name

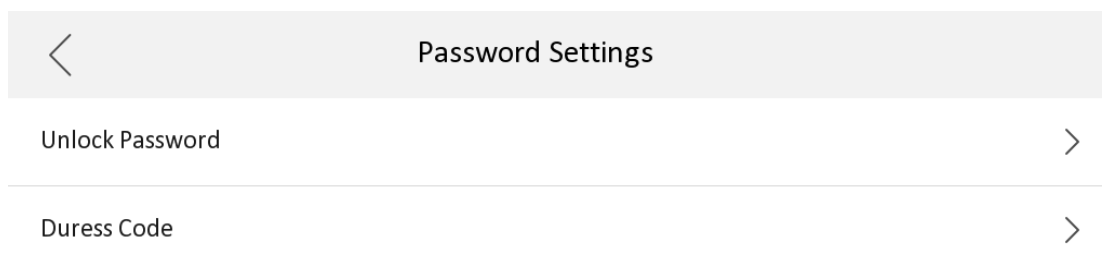
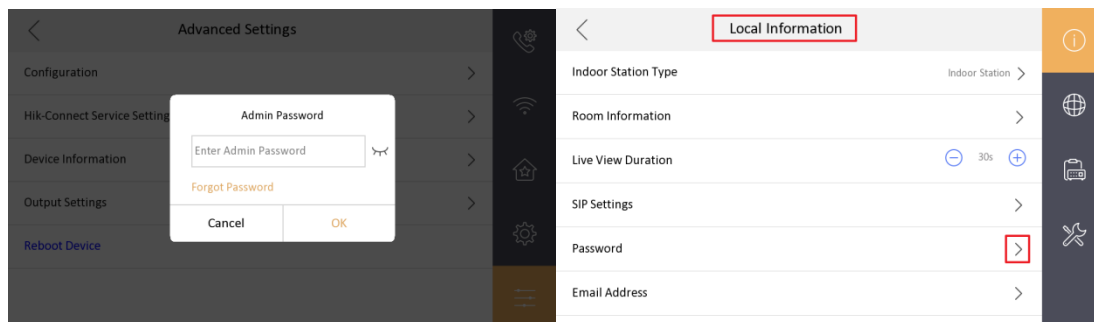
Enter the user name.

Password

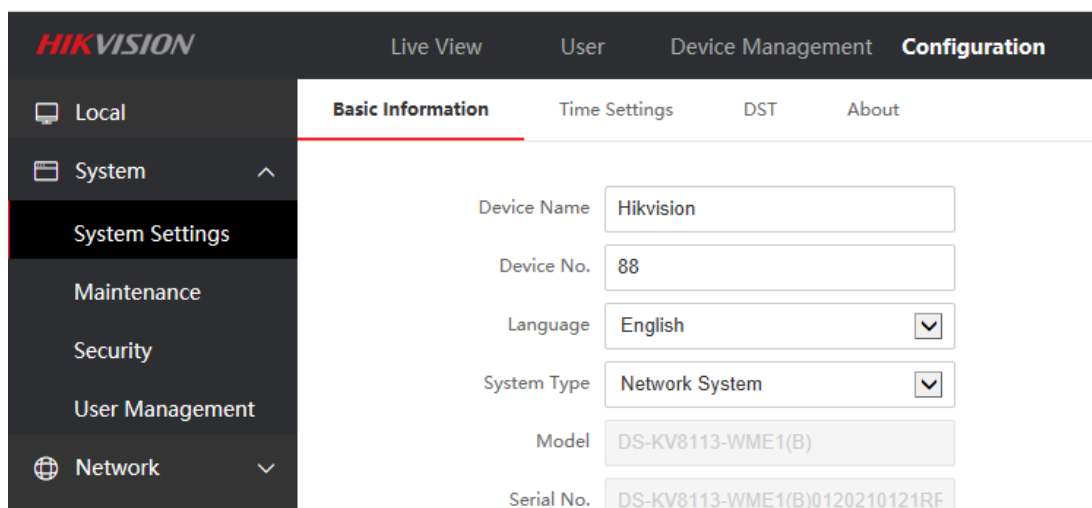
Enter the password. 

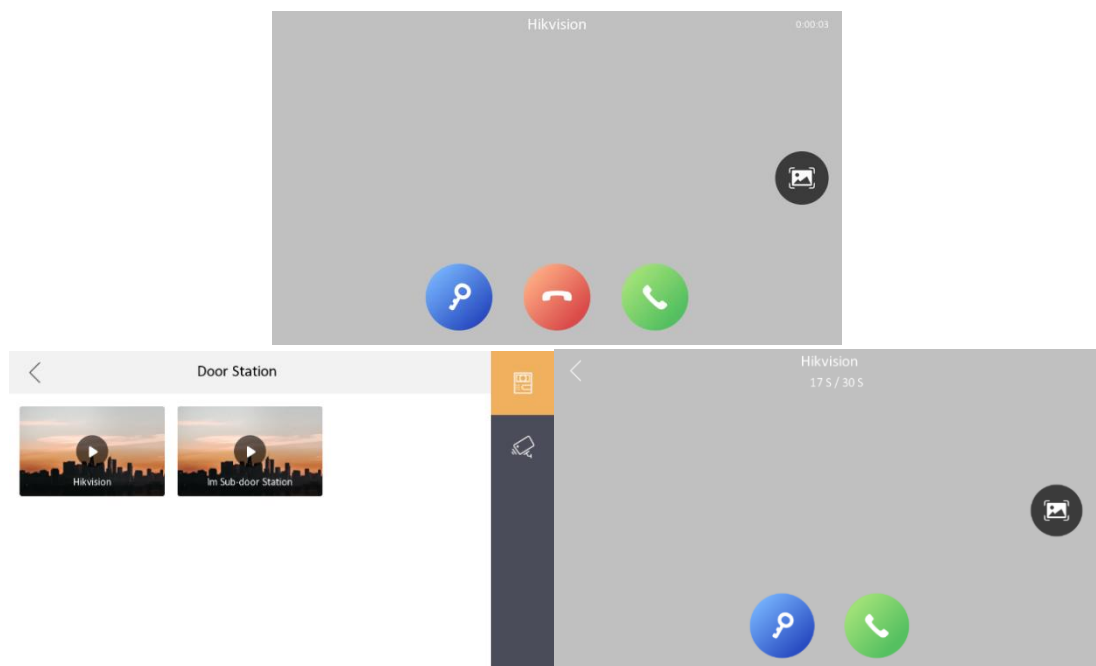
Modify

1. Change the position of unlock password and duress code, to enter the password page requires an admin (activation) password.

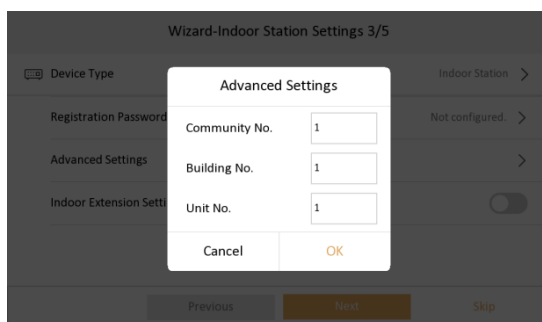


2. When changing the unlock password and duress code, the old password is not required as a credential.
3. The name of the local private SIP password configuration Sip Password is uniformly changed to Registration Password
4. The changed name of the door station(KD8003 modular door station, KV(-B), KB8113) will be displayed on the call interface or live view interface of the indoor station

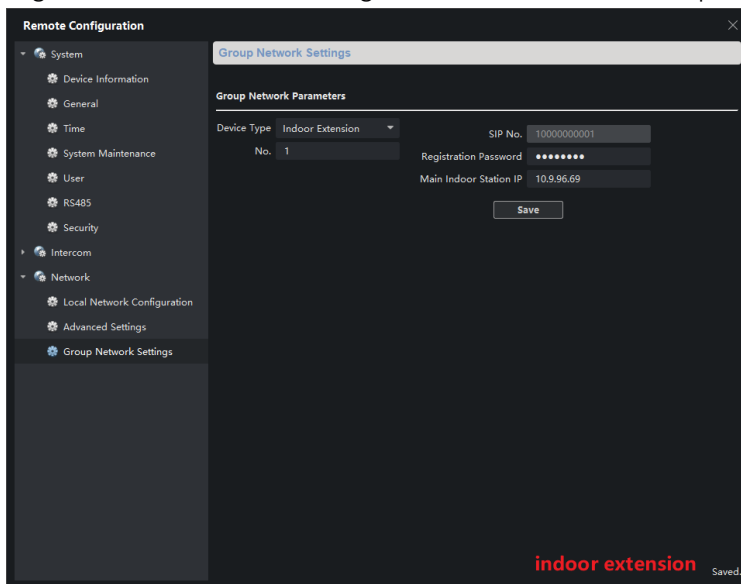




- The local interface community number, building number, and unit number of the indoor station will be stored in the advance column instead of being displayed directly



- The method of adding indoor extensions is changed to the same method as protocol 1.0



2nd Gen Indoor Station

V2.1.10_build201208 Release Note

(2020-12-28)

Device Model	DS-KH8350-WTE1、DS-KH8350-TE1、DS-KH6320-WTE1、DS-KH6320-WTE2、DS-KH6320-WTE2(B)、DS-KH6320-TE1、DS-KH8520-WTE1
Firmware Version	Indoor Station: v2.1.10_build201208

Fix

(1) Solve

the

problem that the door station calls the indoor station, the indoor station refuses to answer, and the HC does not hang up

(2) Solve the problem that the local SADP of the indoor station cannot search for the MinMoe device when docking with the latest version of Minmoe

(3) Solve the problem that when the indoor station is added to the MinMoe device, MinMoe device will restart

(4) Solve the problem that when the activation password of the indoor station contains a capital M, the door station can only call through the main indoor station, but not to the indoor extension

2nd Gen Indoor Station

V2.1.10_build201207 Release Note

(2020-12-27)

Device Model	DS-KH8350-WTE1、DS-KH8350-TE1、DS-KH6320-WTE1、DS-KH6320-WTE2、DS-KH6320-WTE2(B)、DS-KH6320-TE1、DS-KH8520-WTE1
Firmware Version	Indoor Station: v2.1.10_build201207

Fix some**bugs**

2nd Gen Indoor Station

V2.1.10_build200713 Release Note

(2020-07-27)

Device Model	DS-KH8350-WTE1、DS-KH8350-TE1、DS-KH6320-WTE1、DS-KH6320-WTE2、DS-KH6320-WTE2(B)、DS-KH6320-TE1、DS-KH8520-WTE1	<u>New Function</u> 1. Higher security, SIP Passwords
Firmware Version	Indoor Station: v2.1.10_build200713	
iVMS-4200 Version	V3.3.1.4 build 20200806	
Hik-Connect APP	4.6.2.0724	

(Register Passwords)

SIP password is actually Register Password, which is suitable for our security 2.0 protocol. They can communicate normally only when the **SIP passwords (Register passwords)** of the door station, indoor station and indoor extension are the **same**.

Wizard-Settings 3/4

Indoor Station Type
Indoor Station >

Floor
1

Room No.
1

SIP Password
Not Configured. >

Advanced Settings
>

Indoor Extension Settings
>

Previous
Next
Skip

Wizard-Settings 3/4

Indoor Station Type
Indoor Station >

Floor
1

Room No.
1

SIP Password
Not Configured. >

Advanced Settings
>

Indoor Extension Settings
>

Previous
Next
Skip

SIP register password

<

<

Cancel
OK

2. Support three date formats, two clock format configuration (Time format only allows local modification)

1) Support three formats in Settings->General Settings->Time and Date interface, set year-month-day, day-month-year, month-day-year

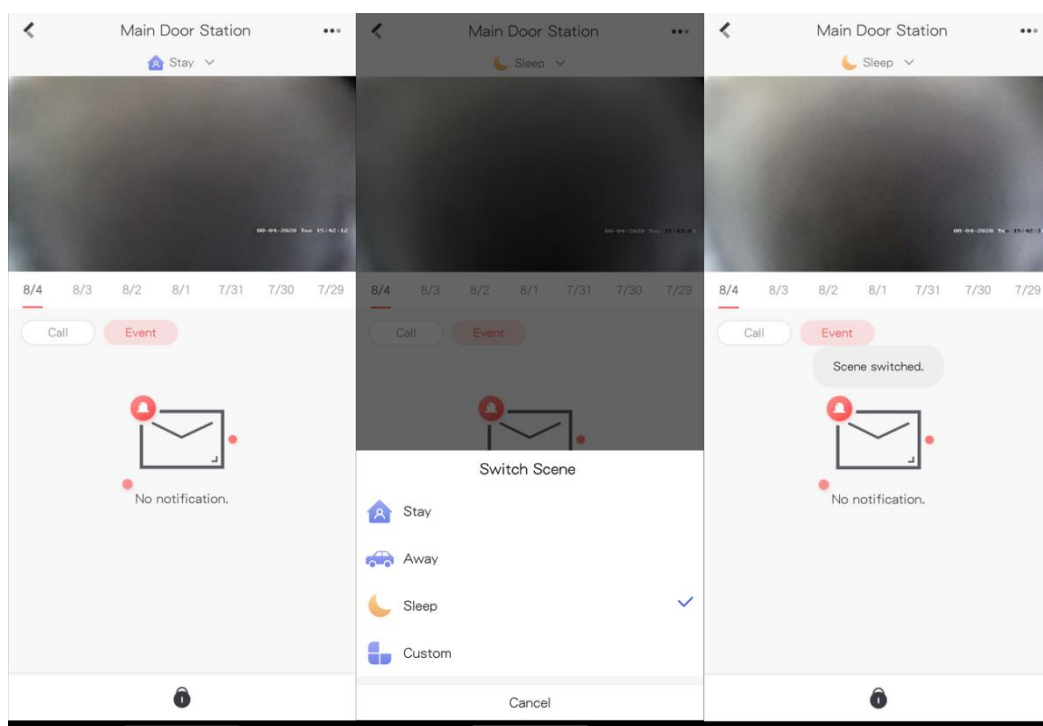
Time and Date	
Date Format	YYYY-MM-DD >
Time Format	<div> <div>YYYY-MM-DD ✓</div> <div>DD-MM-YYYY</div> <div>MM-DD-YYYY</div> </div>
Time	
Sync Time	

2) Support the Settings->General Settings->Time and Date interface, set the 12-hour system, 24-hour system two formats, and the default setting is 24-hour system display.

Time and Date	
Date Format	YYYY-MM-DD >
Time Format	24-Hour Time >
Time	<div> <div>24-Hour Time ✓</div> <div>12-Hour Time</div> </div>
Sync Time	

3. Multi-language added to 12 countries: English, French, Portuguese (Brazil), Spanish, Russian, German, Italian, Polish, Arabic, Turkish, Vietnamese, Ukrainian.

4. The indoor station supports remote scene switching through Hik-Connect, including four modes: Stay, Away, Sleeping and Custom.

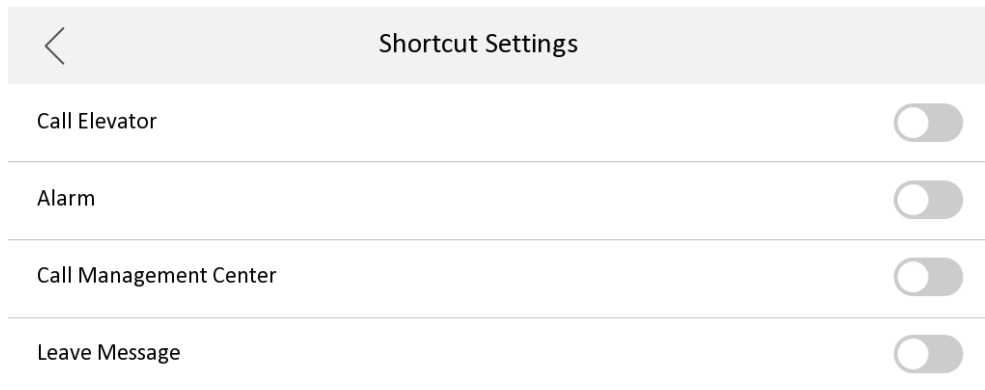


When the indoor station is not currently configured with the arm/disarm password, the Hik-Connect switching scene will fail, and indoor station will send an error code to Hik-Connect App

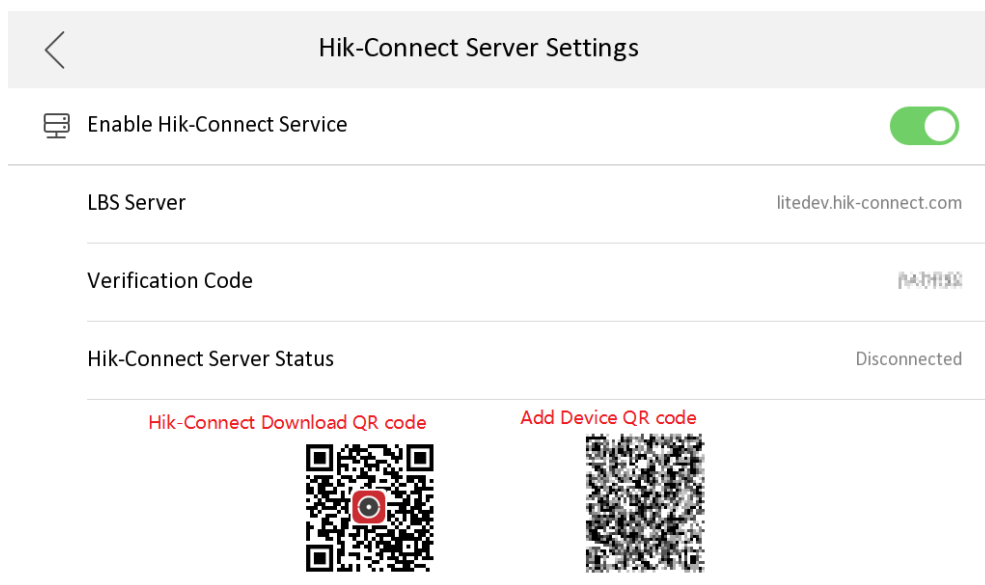
5. Support whether to enable the call management center function, it is disabled by default

6. Support whether to enable the leave message function, it is disabled by default

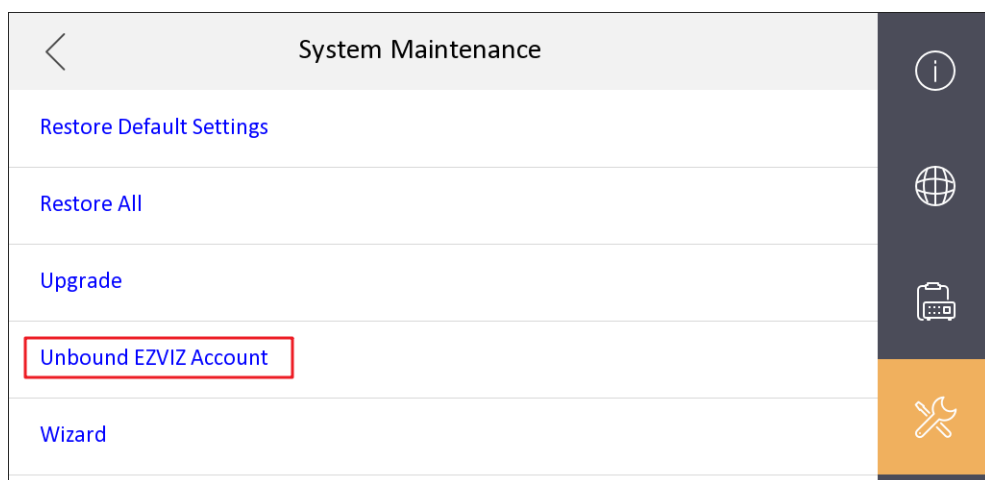
1) In the Settings->More->Preference->Shortcut Settings interface



7. Add the QR code of Hik-Connect App download address to the indoor station Hik-Connect configuration interface



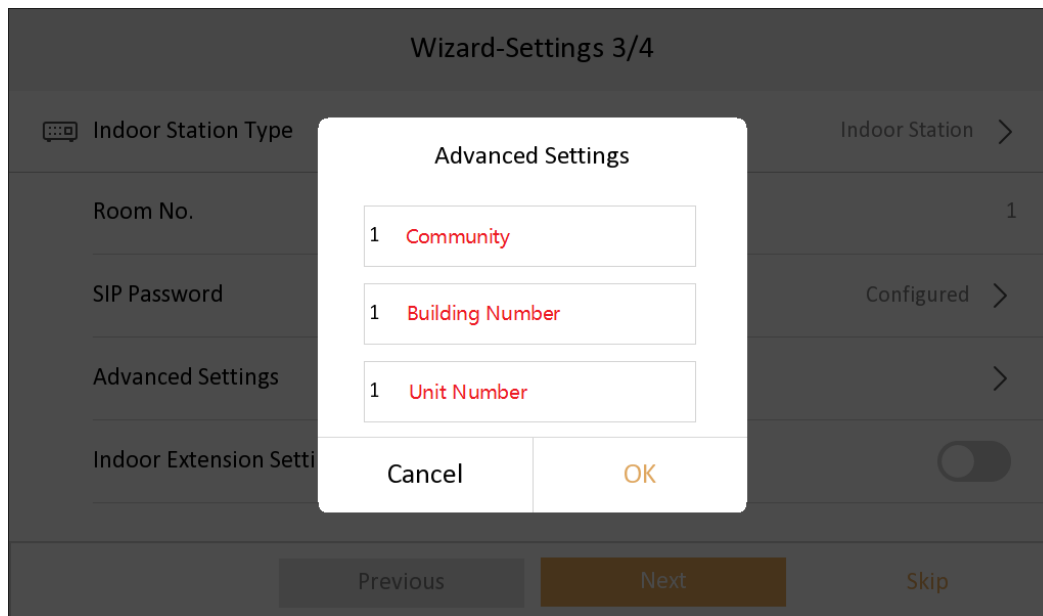
Indoor Station local UI, SADP tool, Hik-connect support fluorite account unbinding



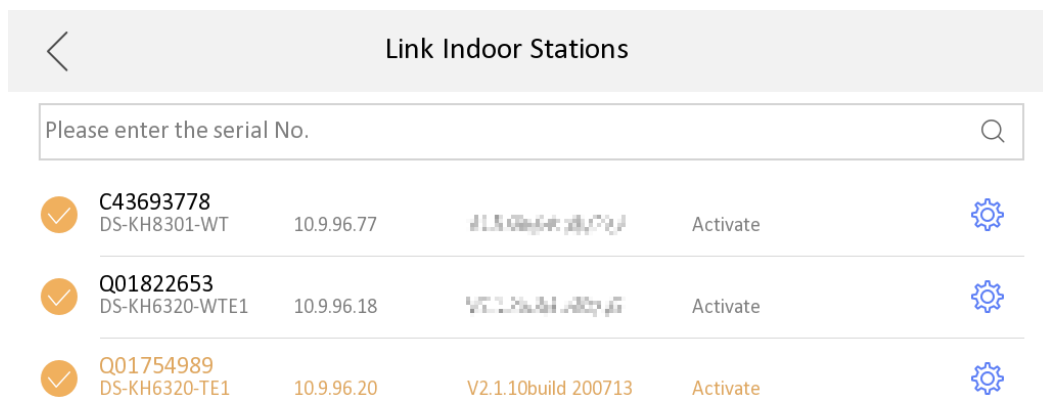
Hikvision Video Intercom v2.0 Protocol

The communication protocol between Hikvision devices uses a secure private call protocol, and the communication with 3rd party devices uses standard SIP;

- 1) Support setting period number, building number, and room number on the indoor station;



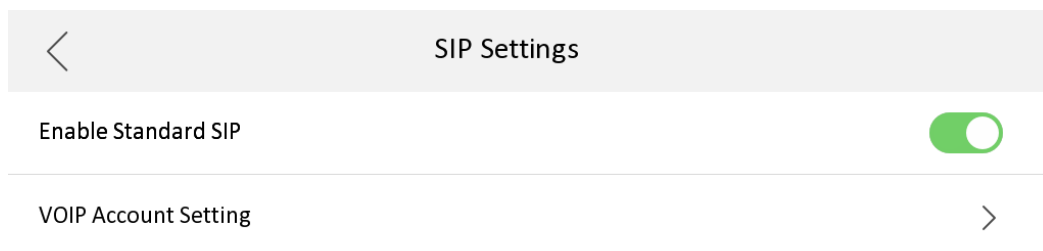
- 2) Support remote configuration of indoor extension information through the main indoor station;



- 3) Standard SIP and private SIP integration:

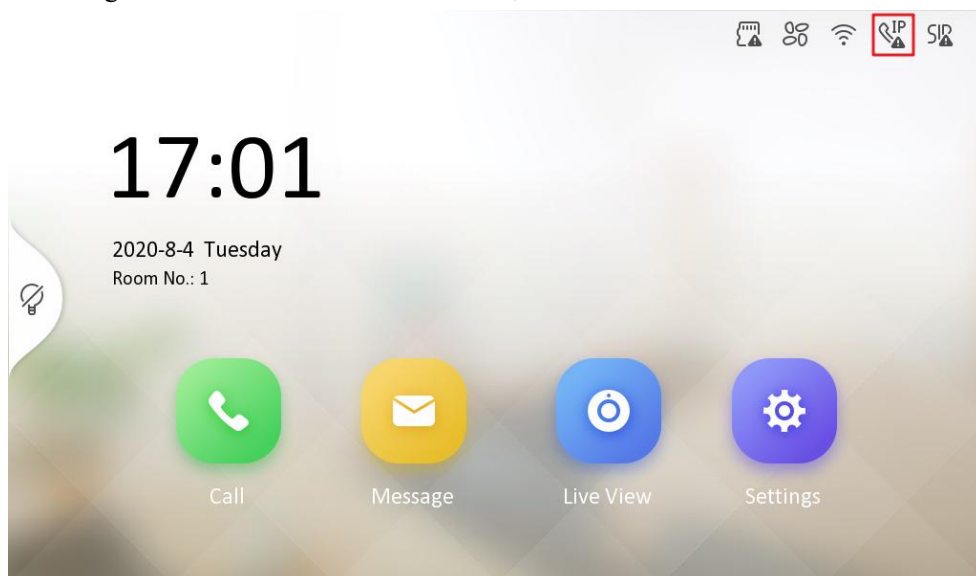
- a) The indoor station does not need to switch to SIP mode;

- b) The standard SIP of the indoor station is disabled by default, if you want to connect to a third-party standard SIP device, you need to turn on this function.

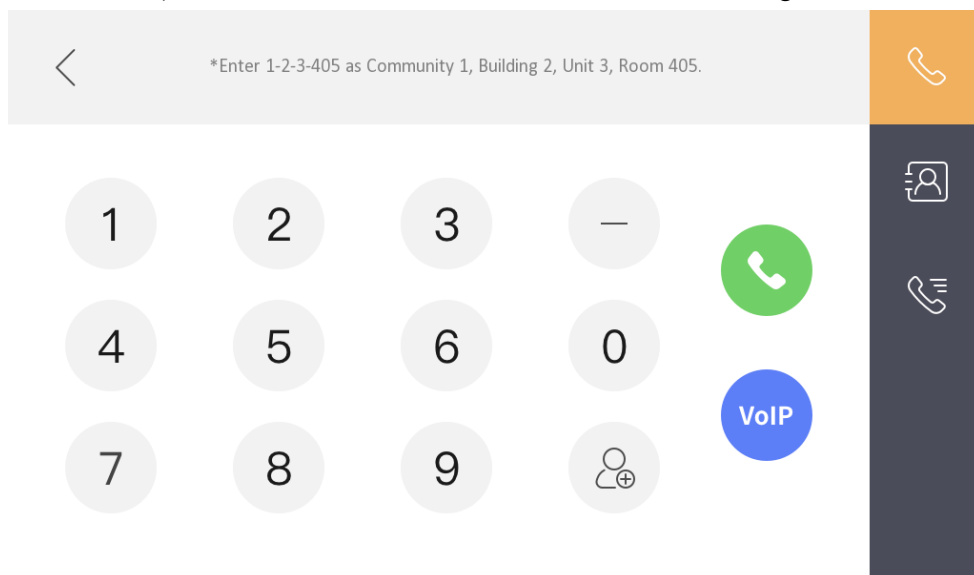


- c) A standard SIP registration status icon is added to the main interface, which can be displayed/hidden

according to whether standard SIP is enabled;



d) Added a VoIP call button in the call interface to distinguish standard SIP calls



4) Supports two audio formats, G.711U and G.711A. (And G.711U priority is greater than G.711A)

NOTE:

1. At present, the indoor station can support customization requirements of more than 5 extensions;
2. The description of ONVIF in the local UI of the indoor station is uniformly changed to open network video interface.
3. The main indoor station and indoor extension must use the same firmware version. And starting from this firmware version, the 1st generation video intercom indoor station will not be compatible as a main indoor station or indoor extension to connect this 2nd generation firmware version system.

Customer Impact and Recommended Action

This update refers to function/compatibility improvement and will take effect automatically after the Date of Change. We are very sorry for any inconvenience of use-habit changes caused by this action.

For any questions and request for this firmware, please contact our local technical support team.

Note:

- Hikvision reserves the right to change, alter or withdraw the above notification without prior notice.
- Product design and specifications are subject to change without prior notice.
- The Hikvision firmware may contain errors known as errata, which may cause the product to deviate from published specifications. Current characterized errata are available on request.
- Hikvision is not liable for any typing or printing errors.

Hikvision Digital Technology CO., Ltd.
No. 555 Qianmo Road, Binjiang District, Hangzhou 310051,
China
Tel: +86-571-8807-5998
FAX: +86-571-8993-5635
Email: overseabusiness@hikvision.com